

Alcuni Rivestimenti Some Upholsteries

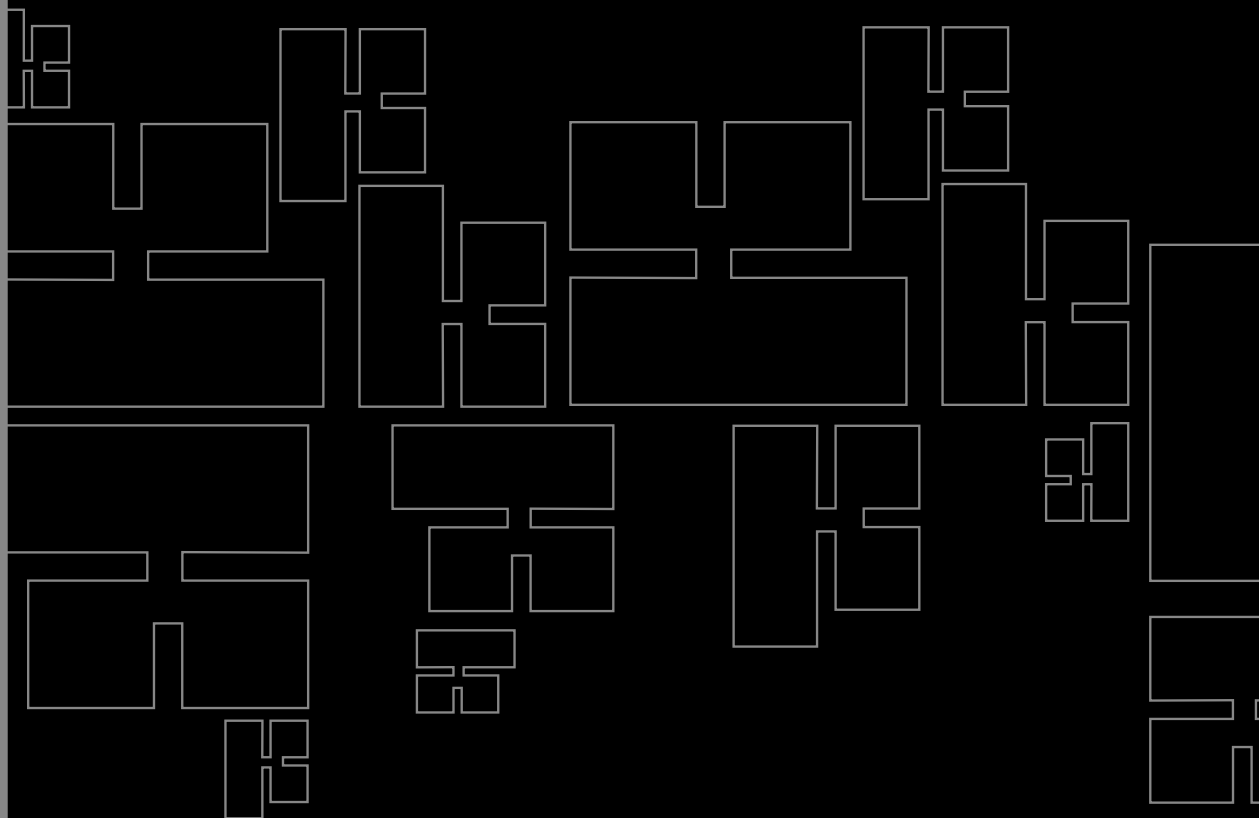
- Colori, tessuti e pelli fotografati sono indicativi
- Colours, fabrics and leathers photographed are indicative

AVVERTENZE GENERALI

I colori chiari, non devono essere messi a contatto con tessuti e capi d'abbigliamento trattati con coloranti non fissati, o con scarse solidità di tintura, onde evitare macchie ed aloni di coloranti di cui non possiamo garantire la pulitura.

GENERAL WARNINGS

To avoid permanent stains, the lighter colours of the article should not be brought into contact with textiles and clothing unfixed dyes. We cannot guarantee the ability to remove unknown dyes from light coloured product.

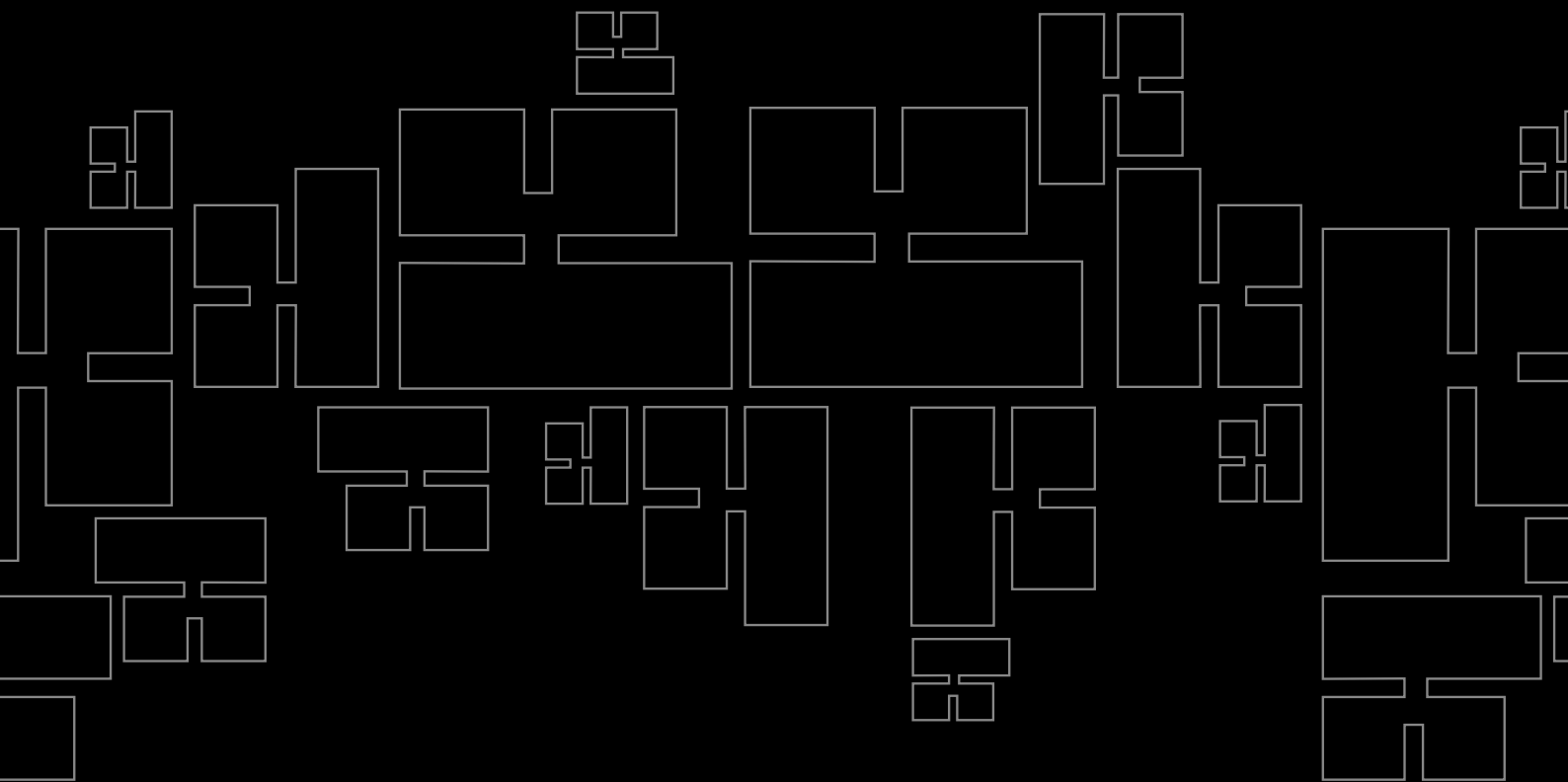


I tessuti spalmati (ecopelli) possono essere sanificati superficialmente come da decreto del Ministero della Salute con soluzioni di acqua e alcool etilico al 70% e prodotti disinfettanti commerciali pronti all'uso. Si consiglia di provare il prodotto su un angolo nascosto della superficie da pulire.

Evidenziamo speciali trattamenti, antimicrobici, antibatterici e antimicotici, che caratterizzano da sempre alcuni nostri rivestimenti, per creare un'efficace barriera difensiva contro batteri, acari e funghi, uniti ad eccezionali caratteristiche di praticità e durata nel tempo.

The coated fabrics (eco-leathers) can be superficially sanitized as per the Decree of the Italian Ministry of Health with solutions of water and 70% ethyl alcohol and commercial disinfectant products ready for use. We suggest to test the product on a small hidden corner of the surface you need to clean.

We focus your attention on special antimicrobial, antibacterial and antifungal treatments, which have always distinguished some of our coatings to create a valid defensive barrier against bacteria, mites and fungi, combined with exceptional features of practicality and durability.



A

Categoria Category

Resistenza alla fiamma - Fire resistance
Certificato Classe 1 UNI 9175 CL. 1 IM
87,5% P.V.C. plastificato - 12,5% cotone
(Martindale 100.000)



PLANET



A 31 F



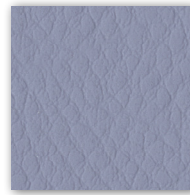
A 32 F



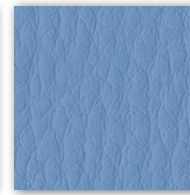
A 29 F



A 37 F



A 28 F



A 30 F



A 35 F



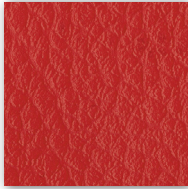
A 26 F



A 34 F



A 38 F



A 39 F



A 36 F



A 27 F

C

Categoria Category

SKILL/SECRET
Resistenza alla fiamma - Fire resistance
Certificato Classe 1 UNI 9175 CL. 1IM - EN 1021 - BS 5852
69% P.V.C. plastificato - 30% cotone - 1% poliuretano
(Martindale 50.000)



SKILL



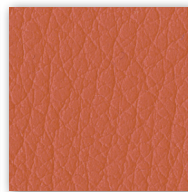
C 40 F



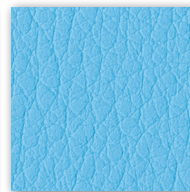
C 41 F



C 42 F



C 43 F



C 44 F



C 45 F



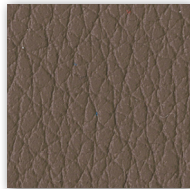
C 46 F



C 47 F



C 48 F



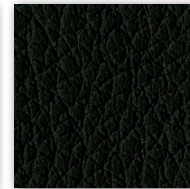
C 49 F



C 50 F



C 51 F



C 52 F

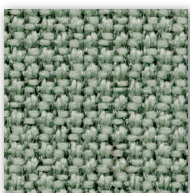
C

Categoria Category

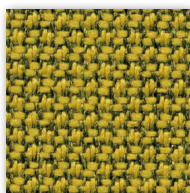
Material: 98% post consumer recycled polyester - 2% polyester
Flammability: EN 1021 1&2 · BS 5852 0&1 CA · TB 117-2013.
Will also pass other flammability standards.
Flame retardant performance is dependent upon the foam used.
Contain no Flame Retardant chemical.
Abrasion resistance: rubs · BS EN 14465 · BS EN ISO 12947-2 (Martindale 100.000)



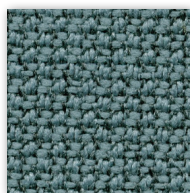
CURA



C 30 C



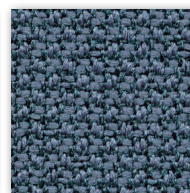
C 31 C



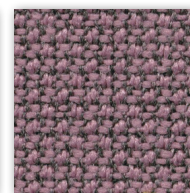
C 32 C



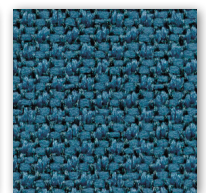
C 33 C



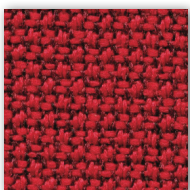
C 34 C



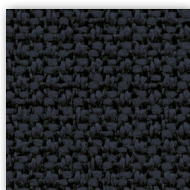
C 35 C



C 36 C



C 37 C



C 38 C

C

Categoria Category

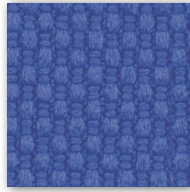
Tessuto altamente ignifugo
Certificato Classe 1 Ministero dell'Interno
Fireproof fabric - Tissu non feu
Brandfester Bezug - Tela ignifuga
100% Poliestere Trevira CS
(Martindale 70.000)



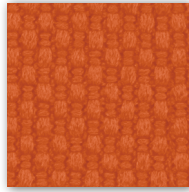
C 381



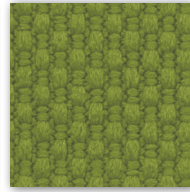
C 38 T



C 383



C 380



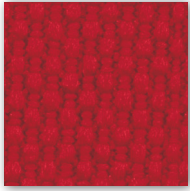
C 385



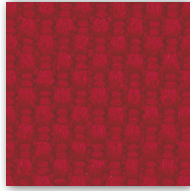
C 38 L



C 38 H



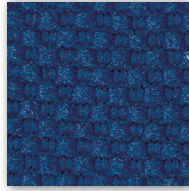
C 382



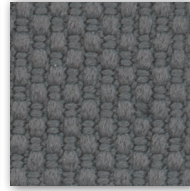
C 386



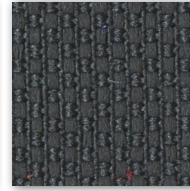
C 387



C-38



C 384



C 38 A



C 388



C 38 G



C 38 M



C 38 P

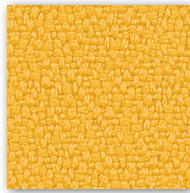
C

Categoria Category

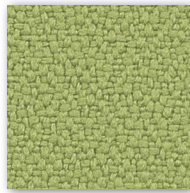
Tessuto altamente ignifugo
Certificato Classe 1 Ministero dell'Interno
Fireproof fabric - Tissu non feu
Brandfester Bezug - Tela ignifuga
100% Xtreme FR®
(Martindale 100.000)



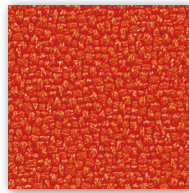
C 335



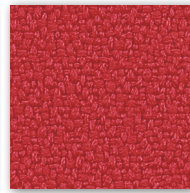
C 336



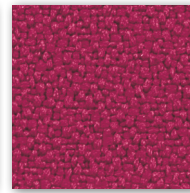
C 332



C 334



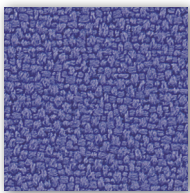
C 329



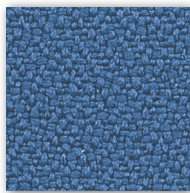
C 337



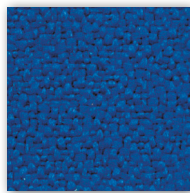
C 327 (Dark brown)



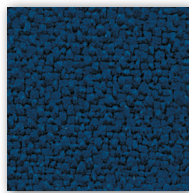
C 339



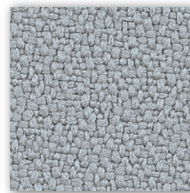
C 325



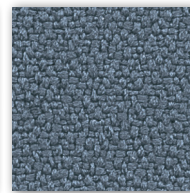
C 326



C 330



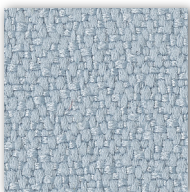
C 331



C 324



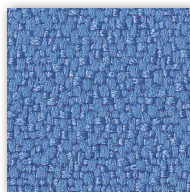
C 328



C 349



C 333



C 338

Solo per modello
Only for model

KEY LINE

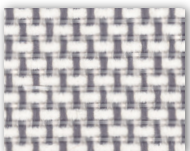
Rete-Mesh-Resille-Membran-Red
70% Polyester - 30% Polyamid
Flammability: EN 1021:2014 part 1
(cigarette test)
(Martindale 170.000)

4902
SHRINX

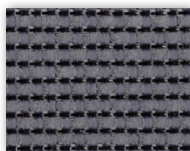
Solo per modello
Only for model

**KROMA, KUPER, KONTAT
KARMA, KORIUUM, KOSMO**

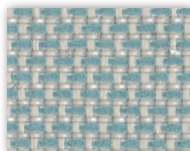
Rete - Mesh - Resille
Membran - Red
64% PL - 36% PA
Martindale 100,000



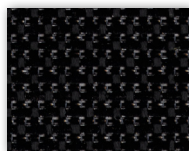
B BEIGE



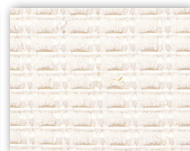
G GRIGIO/GREY



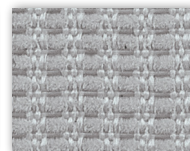
V VERDE/GREEN



N NERO/BLACK



D 218



D 221

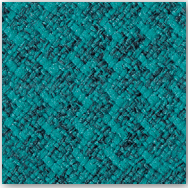


D 222

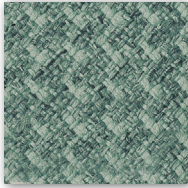
D

Categoria Category

Post consumer recycled polyester 98%
Polyester 2%
Flammability EN 1021 1&2
BS 5852 0&1 - CA TB 117-2013
(Martindale 100.000)



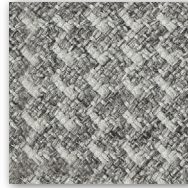
D 51B



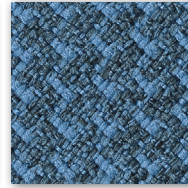
D 52B



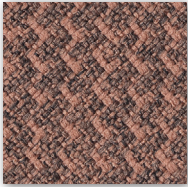
D 53B



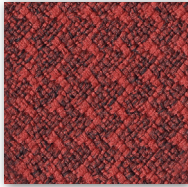
D 54B



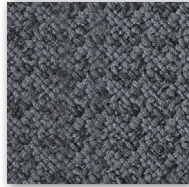
D 55B



D 56B



D 57B



D 58B



D 59B

D

Categoria Category

Resistenza alla fiamma - Fire resistance
Certificato Classe 1 IM EN 1021 Part. 1-2
75% Lana - 25% Poliammide / 75% Wool - 25% Polyamide
(Martindale 100.000)



D 501



D 502



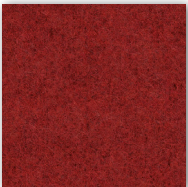
D 503



D 504



D 505



D 506



D 507



D 508



D 509

D

Categoria Category

Resistenza alla fiamma - Fire resistance
UNI 9177 CL. 1 - UNI 9175 CL. 1IM - EN 1021-2
100% PES
(Martindale 60.000)



D 450



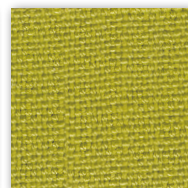
D 451



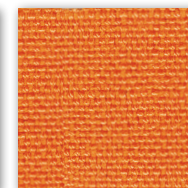
D 452



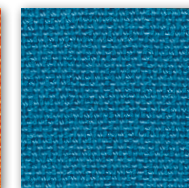
D 453



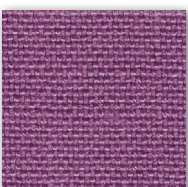
D 454



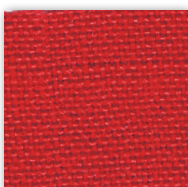
D 455



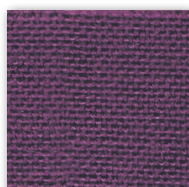
D 456



D 457



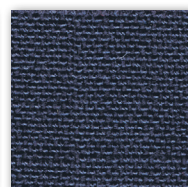
D 458



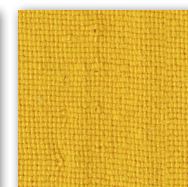
D 459



D 460



D 461



D 462

D

Categoria Category

Trattamento antimicrobico - Antimicrobial treatment
 Impermeabilità - Waterproof
 Resistenza fiamma - Fire resistance
 UNI 9175/87 CL.1IM - EN 1021 BS 5852
 63% Poliuretano / Polyurethane - 29% Cotone - Cotton 8% PES
 IMO A. 652
 (Martindale 150.000)



D 420



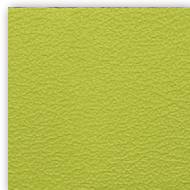
D 426



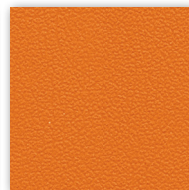
D 430



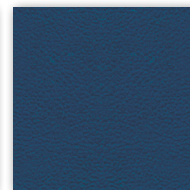
D 427



D 431



D 421



D 423



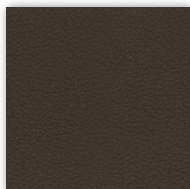
D 432



D 422



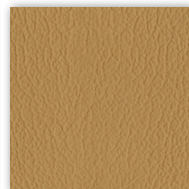
D 425



D 428 (Dark brown)



D 424



D 429

D

Categoria Category

Trattamento antimicrobico - Antimicrobial treatment
 Impermeabilità - Waterproof
 Resistenza fiamma - Fire resistance
 UNI 9175/87 CL.1IM - EN 1021 BS 5852
 63% Poliuretano / Polyurethane - 29% Cotone - Cotton 8% PES
 IMO A. 652
 (Martindale 150.000)



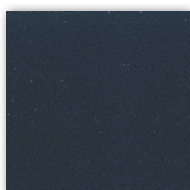
D 470



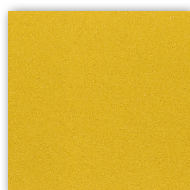
D 471



D 472



D 473



D 474



D 475



D 476



D 477



D 478



D 479



D 480 (Dark brown)



D 481



D 482

P

Categoria Category

Vera pelle - Genuine leather
 Cuir - Leder - Piel auténtica
 A richiesta disponibili altri colori.
 By request any other colours available.



P 901



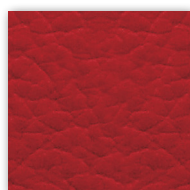
P 915



P 920



P 917



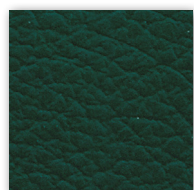
P 909



P 905



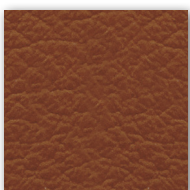
P 911



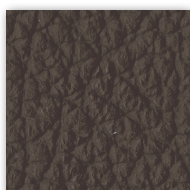
P 910



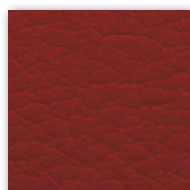
P 912



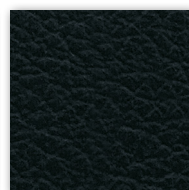
P 908



P 902 (Dark brown)



P 914

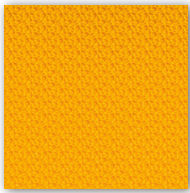


P 903

D

Categoria Category

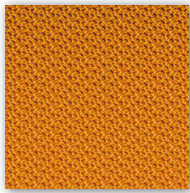
Tessuto ignifugo - Fireproof fabric - Tissu non feu - Brandfester Bezug - Tela ignifuga
 Classe 1IM - DIN 4102 B2 - NF P 92-503/M2
 100% Vinyl-compound - 100% Polyester Ultra Hi-Loft™ Backing
 PERMABLOK® - Waterproof
 (Martindale > 100.000)



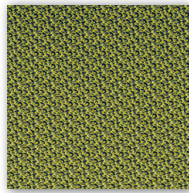
D 801



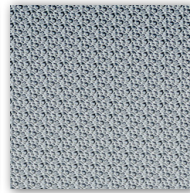
D 802



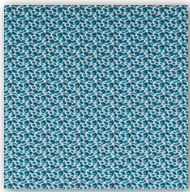
D 803



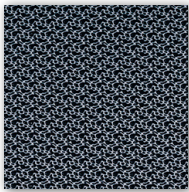
D 804



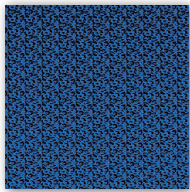
D 805



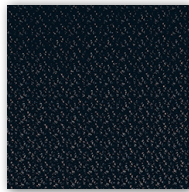
D 806



D 807



D 808



D 809

D

Categoria Category

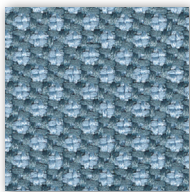
Material: 100% post consumer recycled poliester
 Flammability: EN 1021 1&2 · BS 5852 0&1 Classe 1 · CA TB 117-2013.
 Will also pass other flammability standards.
 Flame retardant performance is dependent upon the foam used.
 Abrasion resistance: rubs · EN ISO 12947-2 (Martindale 100.000)



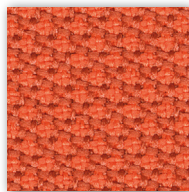
D 40R



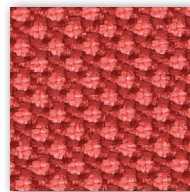
D 41R



D 42R



D 43R



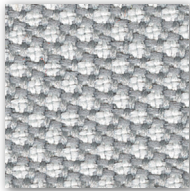
D 44R



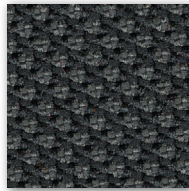
D 45R



D 46R



D 47R



D 48R

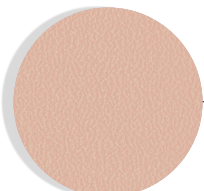
KLIA

COLORI POLIPROPILENE RINFORZATO FIBRA VETRO FIBERGLASS-REINFORCED POLYPROPYLENE COLORS



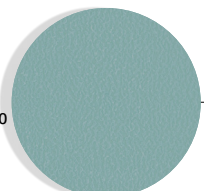
C

Crema
 Cream
 Crème
 Creme
 Crema



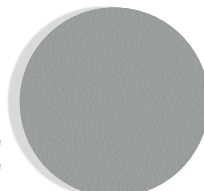
A

Rosa antico
 Old rose
 Vieux rose
 Altrosa
 Rosa antiguo



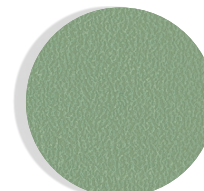
P

Turchese
 Turquoise
 Turquoise
 Türkis
 Turquesa



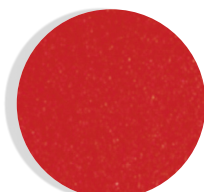
G

Grigio
 Grey
 Gris
 Grau
 Gris



V

Verde
 Green
 Vert
 Grün
 Verde



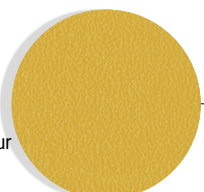
R

Rosso
 Red
 Rouge
 Rot
 Rojo



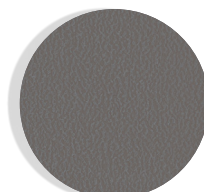
T

Tortora
 Dove-colour
 Tourterelle
 Taube
 Arena



Y

Giallo
 Yellow
 Jaune
 Gelb
 Amarillo



S

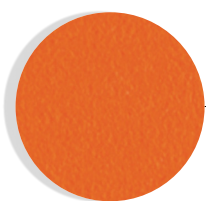
Grigio ardesia
 Slate grey
 Gris ardoise
 Schiefergrau
 Gris pizarra

KICCA KALEA

COLORI POLIPROPILENE
POLYPROPYLENE COLOURS



C
Crema
Cream
Crème
Crema
Crema



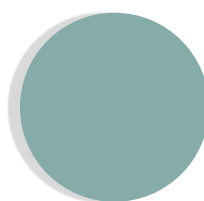
A
Arancio
Orange
Orange
Orange
Naranja



B
Blu
Blue
Bleu
Blau
Azul



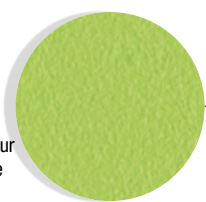
G
Grigio
Grey
Gris
Grau
Gris



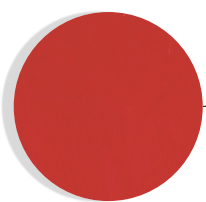
P
Turchese
Turquoise
Turquoise
Türkis
Turquesa



T
Tortora
Dove-colour
Tourterelle
Taube
Arena



V
Verde
Green
Vert
Grün
Verde



R
Rosso
Red
Rouge
Rot
Rojo



N
Nero
Black
Noir
Schwarz
Negro

KICCA ONE

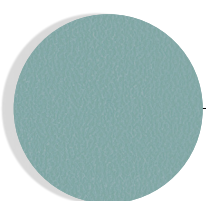
COLORI POLIPROPILENE RINFORZATO FIBRA VETRO
FIBERGLASS-REINFORCED POLYPROPYLENE COLORS



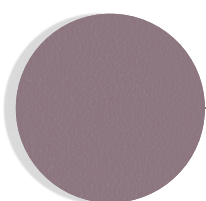
C
Crema
Cream
Crème
Crema
Crema



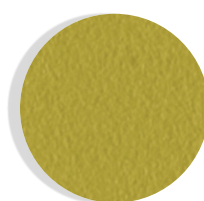
G
Grigio
Grey
Gris
Grau
Gris



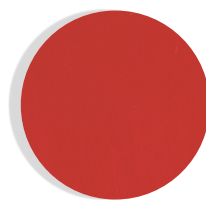
P
Turchese
Turquoise
Turquoise
Türkis
Turquesa



F
Lilla
Lilac
Lila
Lila
Lila



V
Verde
Green
Vert
Grün
Verde



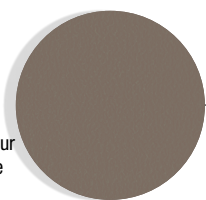
R
Rosso
Red
Rouge
Rot
Rojo



Y
Giallo
Yellow
Jaune
Gelb
Amarillo



T
Tortora
Dove-colour
Tourterelle
Taube
Arena



L
Lava

KRIZIA

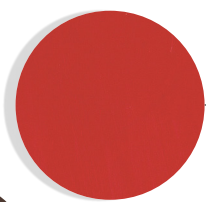
COLORI POLIPROPILENE
POLYPROPYLENE COLOURS

KENSHO KAPİO

COLORI PIANI-BASI
TOPS-BASES COLOURS



B
Bianco
White



R
Rosso
Red
Rouge
Rot
Rojo



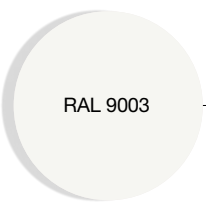
M
Moka



T
Trasparente
Transparent

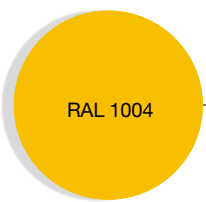


N
Nero
Black
Noir
Schwarz
Negro



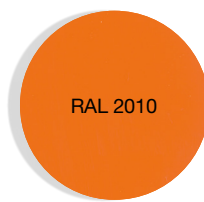
RAL 9003

B
Bianco
White
Blanc
Weiss
Blanco



RAL 1004

G
Giallo
Yellow
Jaune
Gelb
Amarillo

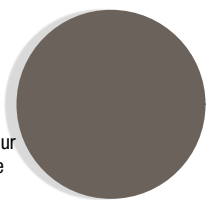


RAL 2010

A
Arancio
Orange
Orange
Orange
Naranja



T
Tortora
Dove-colour
Tourterelle
Taube
Arena



L
Lava



T102
T103