



**VARYA**  
**Finishes Book**  
Fabrics / Leathers / Materials

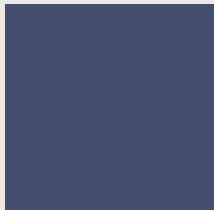
INCLASS

# Mono-shells

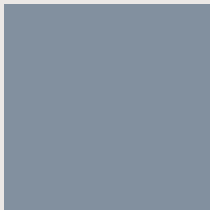
—

## Plastic colours

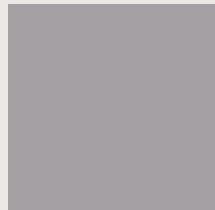
### STANDARD COLOURS



**B36** Navy blue



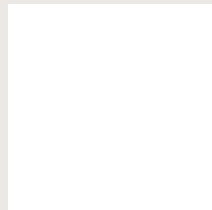
**B44** Sky Blue



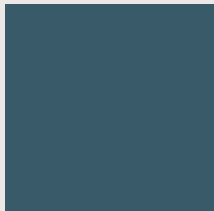
**G42** Light Grey



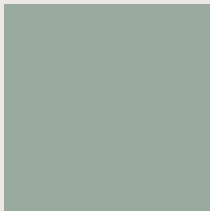
**M82** Stone



**W01** White



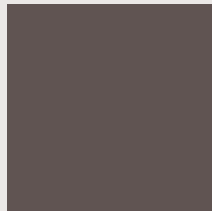
**B40** Marine Green



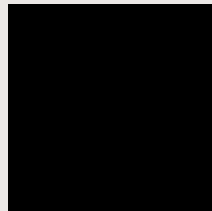
**V16** Turquoise green



**V74** Salvia Green



**M56** Coffee Brown



**B00** Black



**Y62** Mustard



**O25** Clay Orange



**M38** Camel



**P70** Rose



# Bases

—

## Steel bases

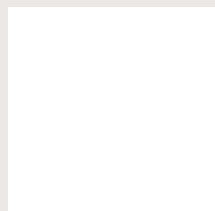
### STANDARD COLOURS



**B00** Black



Aluminum



**W01** White

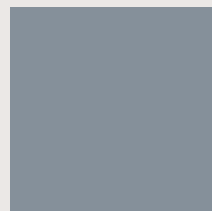
### CHROME



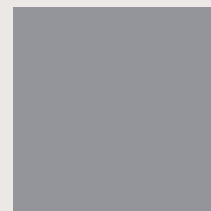
### OPTIONAL COLOURS



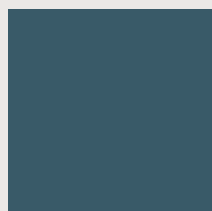
**B36** Navy blue



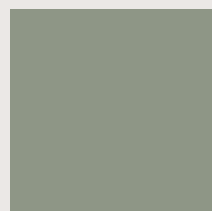
**B44** Sky Blue



**G42** Light Grey



**B40** Marine Green



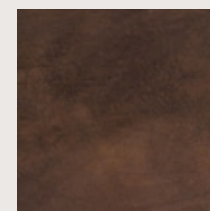
**V16/V74** Salvia Green



**M82** Stone



**M56** Coffee Brown



Rust Brown



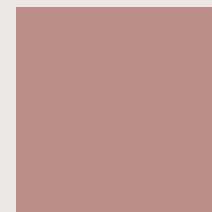
**Y62** Mustard



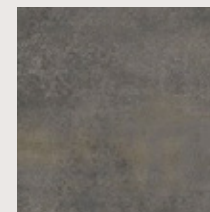
**O25** Clay Orange



**M38** Camel



**P70** Rose

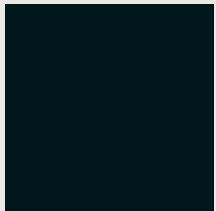


Rust Grey

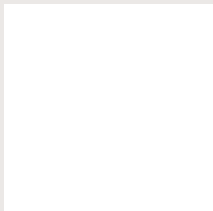
# Bases

## — Aluminum bases

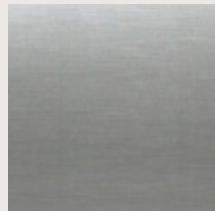
### STANDARD COLOURS



B00 Black



W01 White

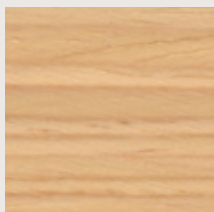


Polished

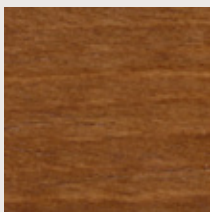
# Bases

## Wooden bases

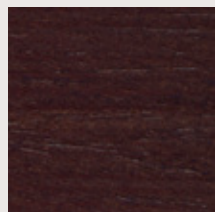
### OAK WOOD



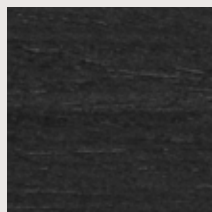
Natural Stain



Walnut Stain



Wenge Stain



Black Stain

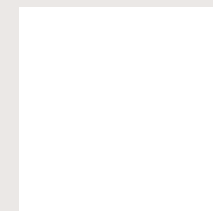
### OPTIONAL LACQUERED COLOURS



B00 Black



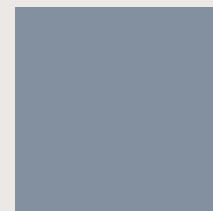
G49 Anthracite



W01 White



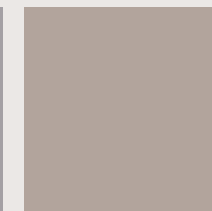
B36 Navy blue



B44 Sky Blue



G42 Light Grey



M82 Stone



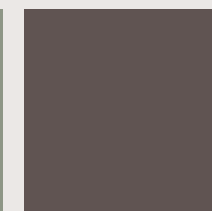
B40 Marine Green



V16 Turquoise green



V74 Salvia Green



M56 Coffee Brown



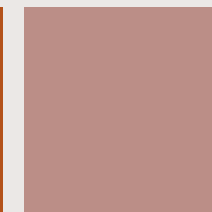
Y62 Mustard



O25 Clay Orange



M38 Camel

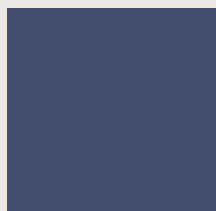


P70 Rose

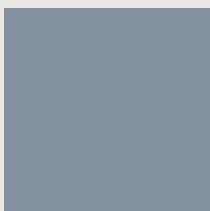
# Bases

## — Plastic bases

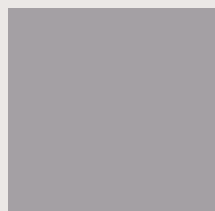
### STANDARD COLOURS



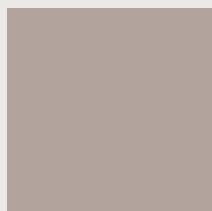
**B36** Navy blue



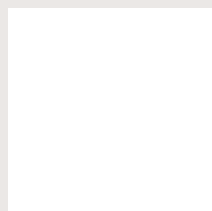
**B44** Sky Blue



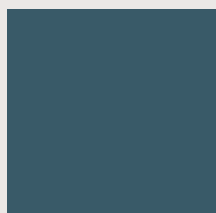
**G42** Light Grey



**M82** Stone



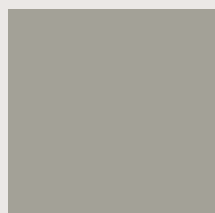
**W01** White



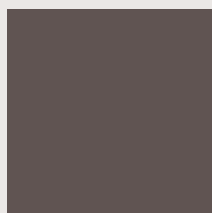
**B40** Marine Green



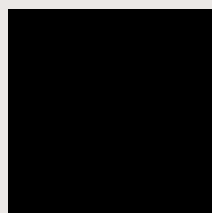
**V16** Turquoise green



**V74** Salvia Green



**M56** Coffee Brown



**B00** Black



**Y62** Mustard



**O25** Clay Orange



**M38** Camel



**P70** Rose

# G1 Bond/Duo

## DATA SHEET - BOND

**Composition:**  
100% polyolefin.

**Lightfastness:**  
6 - 7 UNE-EN ISO 105-B02:2001  
+A1:2002. Method 2

**Abrasion:**  
40.000 Martindale EN ISO 12947-2:1999.

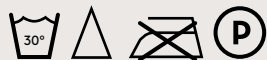
**Resistance to pilling:**  
4 - 5, UNE-EN 14465:2004  
+A1:2007, UNE-EN ISO 12945-2:2001.

**Dye fastness to rubbing:**  
Wet 4 - 5.  
Dry 4 - 5, UNE-EN ISO 105-X12:2003.

**Tear Resistance:**  
Warp: 110N.  
Weft: 100N UNE-EN ISO 13937-3:2001.

**Flammability:**  
EN 1021-1:2006 (cigarette) • BS 5852:2006 (cigarette) • DIN 66084:2003 clasificación P- c • CAL TB 117:2000 Sección E, parte 1 (C.S.191-53; CLASS 1) NFPA 260:2009 Cover fabric CLASS 1.

**With:** 140cm  
**Weight:** 240gr/m<sup>2</sup>



*\*Batch to catch variations may occur within commercial tolerances.*

## DATA SHEET - DUO

**Composition:**  
100% polyolefin.

**Light fastness:**  
6 - 7, UNE-EN ISO 105-B02:2001  
+A1:2002. Method 2.

**Abrasion:**  
40.000 Martindale EN ISO 12947-2.

**Resistance to pilling:**  
4 - 5, UNE-EN 14465:2004  
+A1:2007, UNE-EN ISO 12945-2:2001.

**Dye fastness to rubbing:**  
Wet 4 - 5.  
Dry 4 - 5, UNE-EN ISO 105-X12:2003.

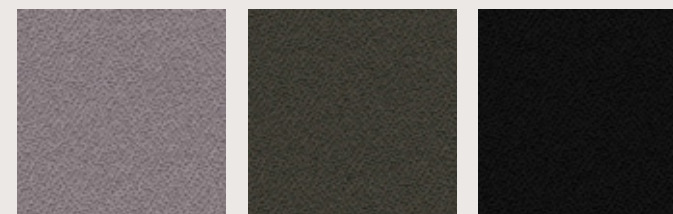
**Tear Resistance:**  
Warp: 180N.  
Weft: 160N UNE-EN ISO 13937-3:2001.

**Flammability:**  
EN 1021-1:2006 (cigarro) • BS 5852:2006 (cigarro) • DIN 66084:2003-07 clasificación P- c • CAL TB 117:2000 Sección E, parte 1 (C.S.191-53; CLASS 1) NFPA 260:2009 Cover fabric CLASS 1.

**With:** 140cm  
**Weight:** 300gr/m<sup>2</sup>



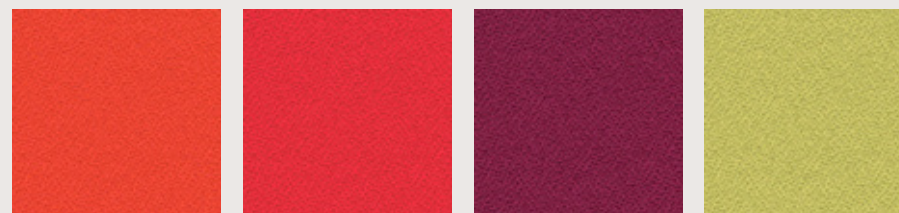
*\*Batch to catch variations may occur within commercial tolerances.*



BOND 81

BOND 5518

BOND 9

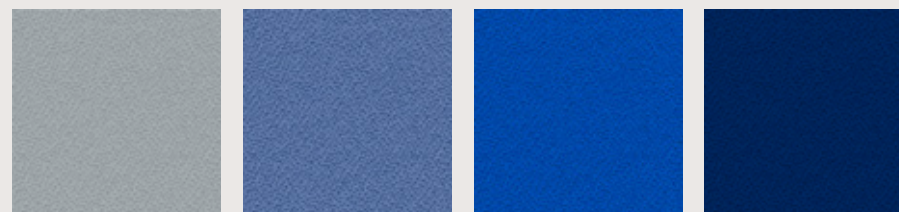


BOND 76

BOND 79

BOND 109

BOND 77

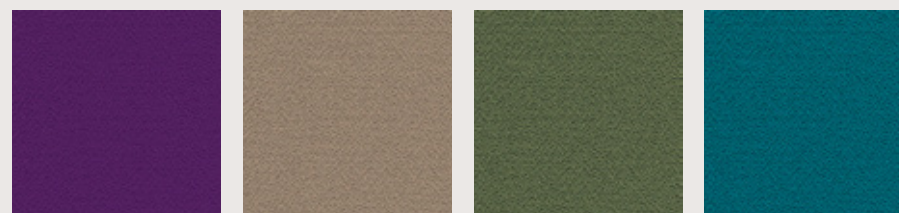


BOND 8078

BOND 204

BOND 169

BOND 6098

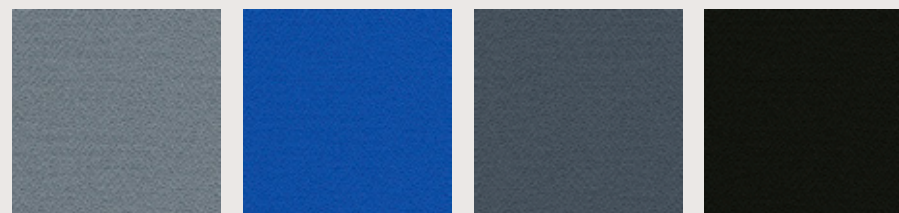


DUO 760

DUO 450

DUO 533

DUO 429



DUO 220

DUO 229

DUO 600

DUO 840

# G2 Addo

## DATA SHEET

### Composition:

80% polyester, 20% cotton.

### Lightfastness:

5, ISO 105 B02, Method 2.

### Abrasion:

40.000 Martindale ISO 12947-1, 2.

### Resistance to pilling:

4, ISO 12945-2:002.

### Rubbing fastness in humid state:

3, ISO 105-X12:2001.

### Rubbing solvents:

4 - 5, ISO 105-X12:2001.

### Seam strength:

Warp 3mm. Weft 2mm, ISO 13936-2.

### Tear strength:

Warp exceed 175,1N. Weft exceed 120,7N, EN ISO 13937-3.

### Flammability:

EN 1021 - 1 (cigarette).

With: 140cm

Weight: 365gr/m<sup>2</sup>

—



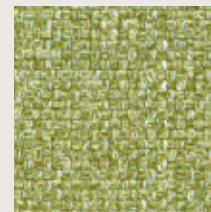
*\*Batch to catch variations may occur within commercial tolerances.*



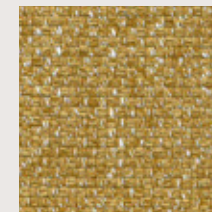
12



10



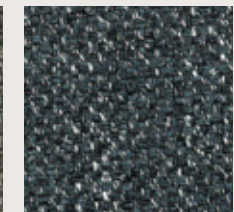
14



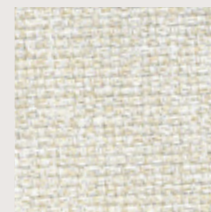
15



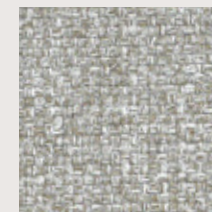
16



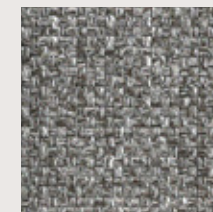
11



5



6



7



8



4



3



30



1



# G2 Steve/West

## DATA SHEET - STEVE

**Composition:**

100% polyester.

**Light fastness:**

5, ISO 105X12, ISO 12945-2.

**Abrasion:**

>25.000 Martindale ISO 12947-2:1998.

**Resistance to pilling:**

4 - 5, ISO 105X12, ISO 12945-2.

**Dye fastness to rubbing:**

Wet 4 - 5.

Dry 4 - 5, ISO 105X12, ISO 12945-2.

**Seam strength:**

Warp 3mm.

Weft 3mm, ISO 13936-2.

**With:** 140cm

**Weight:** 215gr/m<sup>2</sup>

—



*\*Batch to catch variations may occur within commercial tolerances.*



## DATA SHEET - WEST

**Composition:**

75% polyester, 30% cotton.

**Light fastness:**

5, UNE 40187, BS 1006-B02.

**Abrasion:**

>40.000 Martindale BS 5690, BS 2543:1995.

**Resistance to pilling:**

4 - 5, ISO/DIS 12945-2.

**Dye fastness to rubbing:**

Wet 5, ISO 105-D01, UNE 40099.

Dry 5, ISO 105-C06, UNE 40029.

**Seam strength:**

Warp 3mm, BS 3320:1988.

Weft 3mm, BS 2543:1995.

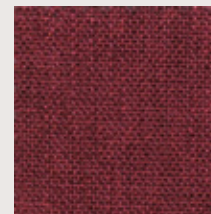
**With:** 140cm

**Weight:** 248gr/m<sup>2</sup>

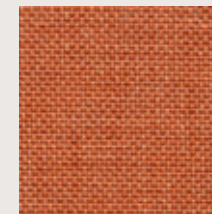
—



*\*Batch to catch variations may occur within commercial tolerances.*



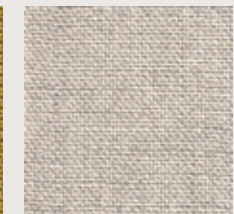
WEST 14



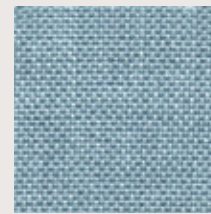
STEVE 24



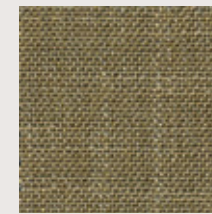
STEVE 23



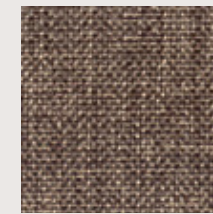
WEST 7



STEVE 27



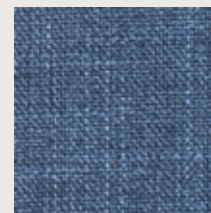
WEST 19



STEVE 13



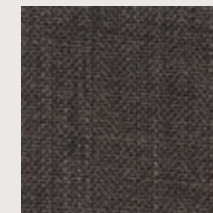
WEST 4



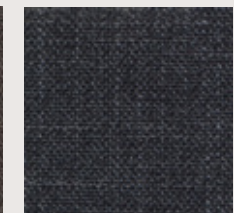
WEST 16



STEVE 18



WEST 12



WEST 1

# G2 Pixel

## DATA SHEET

### Composition:

100% polyolefin.

### Light fastness:

5 - 6, UNE-EN ISO 105-B02:2001 +A1:2002. Method 2.

### Abrasion:

40.000 Martindale EN ISO 14465:2004.

### Resistance to pilling:

4 - 5, UNE-EN 14465:2004.

### Dye fastness to rubbing:

Wet 4 - 5. Dry 4 - 5, UNE-EN ISO 105-X12:2003.

### Tear Resistance:

Warp: 120N. Weft: 130N UNE-EN ISO 13937-3:2001.

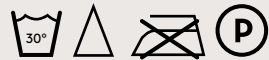
### Flammability:

EN 1021-1:2015 (cigarette) • BS 5852:2006 (cigarette) • DIN 66084:2003-7 classification P- c • CAL TB 117:2013 Section 1: COVER FABRIC TEST NFPA 260:2013 CLASS 1.

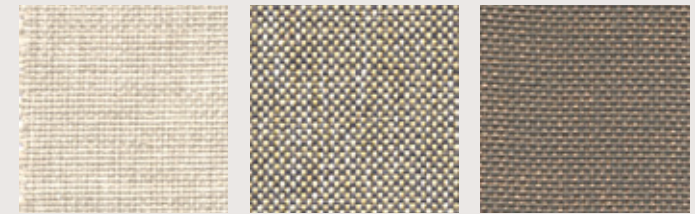
With: 140cm

Weight: 255gr/m<sup>2</sup>

—



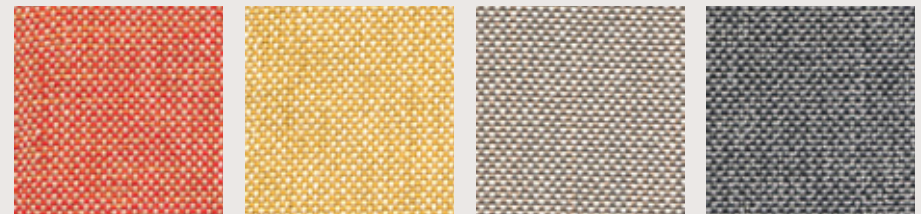
*\*Batch to catch variations may occur within commercial tolerances.*



3

12

40

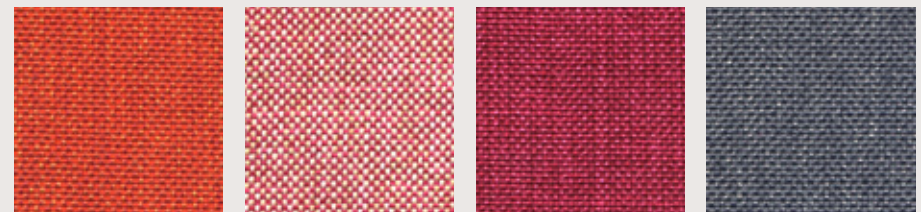


53

50

10

21



64

54

61

29



101

102

71

80



# G2 Cora/Orum

## DATA SHEET - CORA

**Composition:**

100% polyester.

**Light fastness:**

5 EN ISO 105-B02, Method 2.

**Abrasion:**

83.000 Martindale EN ISO 12947-1, 2.

**Resistance to pilling:**

4, EN ISO 12945-2:2002.

**Rubbing fastness in humid state:**

5, ISO 105-X12:2001.

**Rubbing solvents:**

5, ISO 105-X12:2001.

**Seam strength:**

Warp 2,5mm. Weft 3,7mm, ISO 13936-2.

**Tear strength:**

Warp exceed 154,2N.

Weft exceed 112,3N, EN ISO 13937-3.

**Flammability:**

EN 1021 - 1 (cigarette).

**With:** 140cm

**Weight:** 330gr/m<sup>2</sup>



\*Batch to catch variations may occur within commercial tolerances.



## DATA SHEET - ORUM

**Composition:**

100% polyester.

**Light fastness:**

4 - 5, ISO 105X12 ISO 12945-2.

**Abrasion:**

>35.000 Martindale, ISO 12947-2 1998.

**Resistance to pilling:**

4 - 5, ISO 105X12 ISO 12945-2.

**Dye fastness to rubbing:**

Wet 4 - 5. Dry 4 - 5, ISO 105x12, ISO 12945-2.

**Tear strength:**

Warp exceed 63N, EN ISO 13937-3.

Weft exceed 63N, EN ISO 13937-3 (A & B).

**Seam strength:**

Warp 6mm.

Weft 6mm, EN ISO 13936-2 (A).

**With:** 140cm

**Weight:** 450gr/m<sup>2</sup>



\*Batch to catch variations may occur within commercial tolerances.



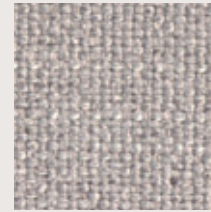
CORA 3



ORUM 1



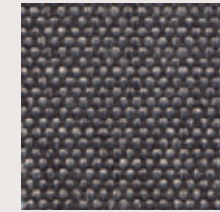
CORA 2



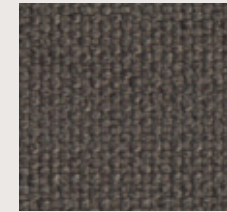
ORUM 4



CORA 14



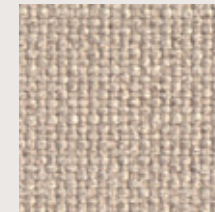
CORA 20



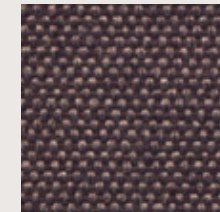
ORUM 10



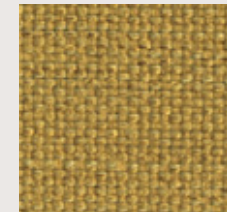
CORA 12



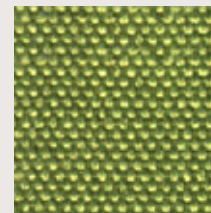
ORUM 8



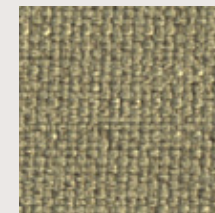
CORA 27



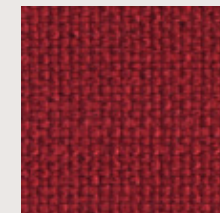
ORUM 11



CORA 32



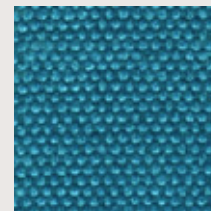
ORUM 19



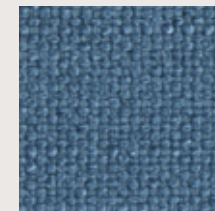
ORUM 14



CORA 9



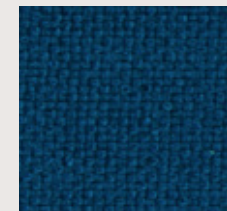
CORA 17



ORUM 13



CORA 18



ORUM 7

# G2 Hilton

## DATA SHEET

**Composition:**  
100% polyester.

**Lightfastness:**  
4, ISO 105 B02:1994.

**Abrasion:**  
>25.000 Martindale ISO 12947-2:1998.

**Resistance to pilling:**  
4 - 5, ISO 12945-2.

**Tear strength:**  
Warp 63N. Weft 63N, ISO13937-3:2000.

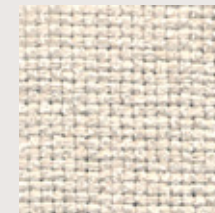
**Dye fastness to rubbing:**  
Wet 4 - 5. Dry 4 - 5, ISO 105X12:2001.

**With:** 140cm  
**Weight:** 380gr/m<sup>2</sup>

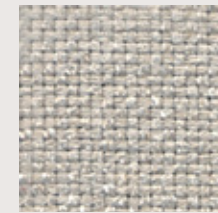
—



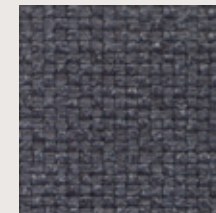
*\*Batch to catch variations may occur within commercial tolerances.*



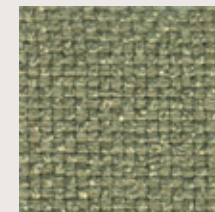
6



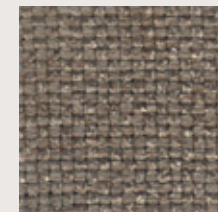
4



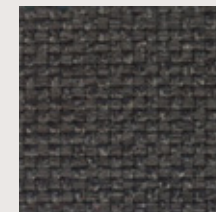
2



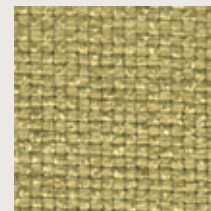
18



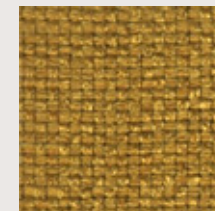
8



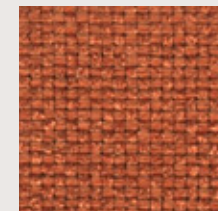
9



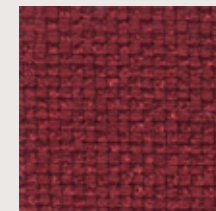
17



10



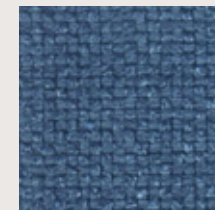
11



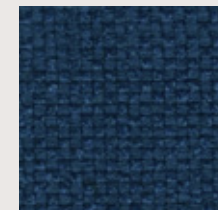
12



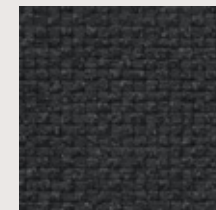
16



13



14



1



# G2 Reno

## DATA SHEET

**Composition:**

100% P.V.C.

**Light fastness:**

6 - 7, ISO 105 B02.

**Abrasion:**

>45.000 Martindale EN ISO 12947.

**Breaking strength:**

Warp 360. Weft 150

EN ISO 13934-1 • UNE-EN ISO 1421.

**Tear strength:**

Warp 23. Weft 26 EN ISO 13937-3.

**Resistance to pilling:**

5, ISO 12945-2:2000.

**Fastness to rubbing:**

Wet 4 - 5. Dry 4 - 5, ISO 105 X12.

**Flammability:**

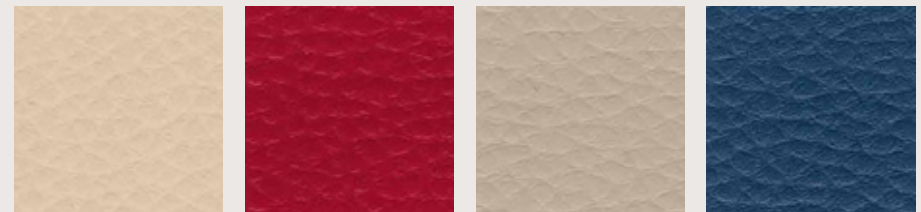
UNE - EN 1021: 1 & 2 • BS 5852 • EN 23 727-90 IR.

**With:** 140cm

**Weight:** 540gr/m<sup>2</sup>



*\*Batch to catch variations may occur within commercial tolerances.*



56

78

96

5

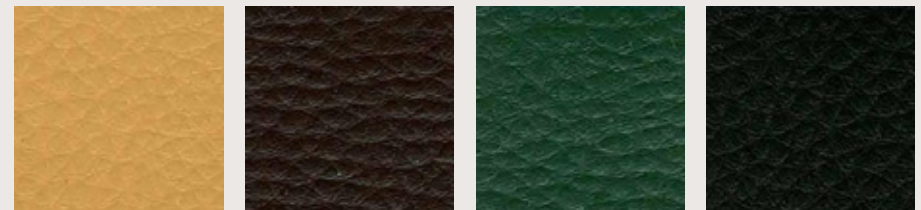


6

25

8

47



51

97

37

75

# G3 Era

by Camira

## DATA SHEET

**Composition:**

100% polyester.

**Light fastness:**

5, EN ISO 105 B02.

**Abrasion:**

≥100.000 Martindale EN ISO 12947.

**Fastness to rubbing:**

Wet 4. Dry 4, ISO 105 X12.

**Flammability:**

EN 1021 - 1 (cigarette) • EN 1021 - 2 (match) • BS 7176 Low Hazard • EN 13501-1 Adhered Class B, s1, d0 • EN 13501-1 Un-adhered Class C, s1, d0.

**Environment:**

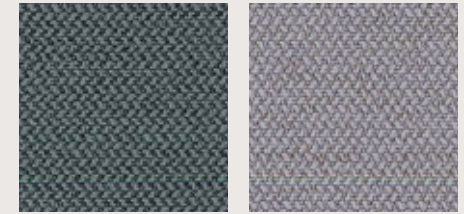
OEKO-TEX® Standard 100.

**With:** 140cm

**Weight:** 320gr/m<sup>2</sup>



*\*Batch to catch variations may occur within commercial tolerances.*



13

11



21

2

1

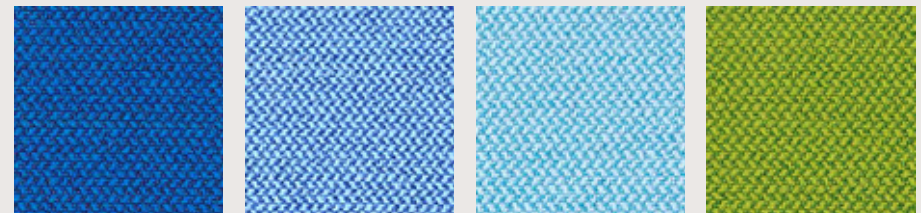


9

6

19

3



12

8

20

16

# G3 Xtreme

## DATA SHEET

### Composition:

100% recycled polyester.

### Light fastness:

6, EN ISO 105 B02.

### Abrasión:

≥100.000 Martindale EN ISO 12947.

### Fastness to rubbing:

Wet 4. Dry 4, ISO 105 X12.

### Flammability:

EN 1021 - 1 (cigarette) • EN 1021 - 2 (match) • BS 7176 Low Hazard • BS 5852 Ignition Source 5 • BS 7176 Medium Hazard • DIN 4102 B1 • NF D 60-013 • ÖNORM B 3825 & A 3800-1 (con CMHR 58 kg/m<sup>3</sup> de espuma) • UNI 9175 Classe 1 IM • BS 476 Part 7 Class 1.

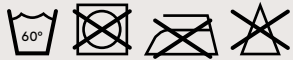
### Environment:

OEKO-TEX® Standard 100 • EU Ecolabel.

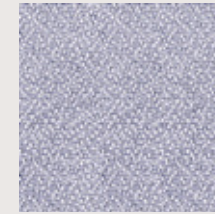
With: 140cm

Weight: 310gr/m<sup>2</sup>

—



*\*Batch to catch variations may occur within commercial tolerances.*



173



74



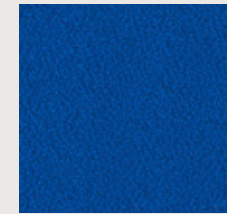
169



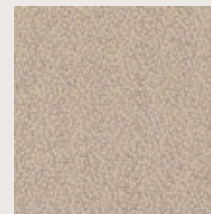
81



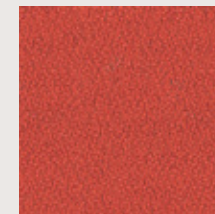
96



82



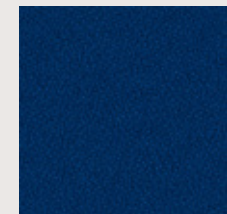
108



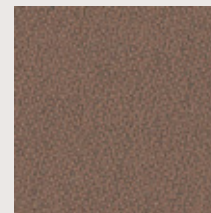
76



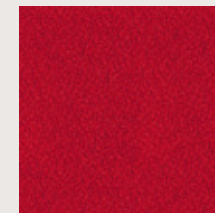
77



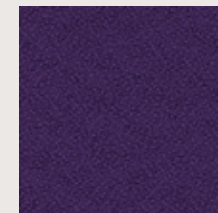
26



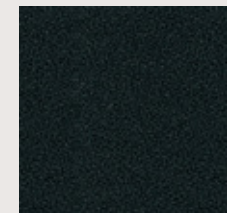
91



79



84



9



# G3 Medley

by Gabriel

## DATA SHEET

### Composition:

100% polyester.

### Light fastness:

5 - 7, EN ISO 105 B02.

### Abrasion:

75.000 Martindale EN ISO 12947-2.

### Resistance to pilling:

4, EN ISO 12945-2.

### Fastness to rubbing:

Wet 4 - 5. Dry 4 - 5, ISO 105 X12.

### Flammability:

BS EN 1021 1&2 Cigarette and Match • BS EN 1021-1 Cigarette • BS 5852 Part 1 0,1 Cigarette & match • BS 476 Part 7, class 2 • Class Uno UNI 9174 - UNI 8457 • ÖNORM B 3825-B2-3800-Q1 UK • CA TB 117-2013 • ASTM E 84.

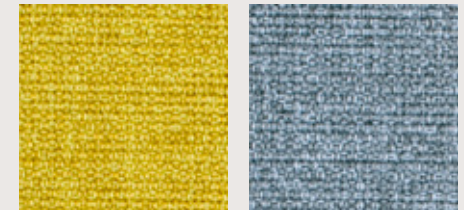
With: 140cm

Weight: 510gr/m<sup>2</sup>



60° shrinkage max. 1%

*\*Batch to catch variations may occur within commercial tolerances.*



62002

66008

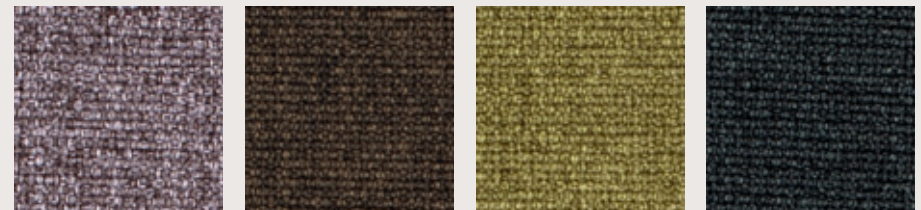


64019

61003

68002

66010



65011

61004

67002

60999



# G3 Mar

## DATA SHEET

### Composition:

12% PU, 70% PVC, 12% PES, 6% CO.

### Light fastness:

6 - 7, UNE EN ISO 105-B02/A1:2002.

### Abrasion:

>300.00 ciclos, Martindale EN ISO 5470-2:2003 met. 2.

### Tear strength:

Longitudinal 95 N - C.V. 22,1%. Transversal 87 N - C.V. 4,2%, UNE EN ISO 4674/1A.

### Breaking strength:

Longitudinal 407 N - C.V. 9,1%.  
Transversal 506 N - C.V. 3,1%, EN ISO 1421-2.

### Colour fastness to rubbing:

Wet: Longitudinal 5 - Transversal 5.

Dry: Longitudinal 5 - Transversal 5. UNE EN ISO 105-X12:2003.

### Resistance to shear:

>50.000 cycles, UNE EN ISO 5981:1998 met. B.

### Flammability:

Behaviour level A, DIN EN 1021: 1 + 2.

### Environment:

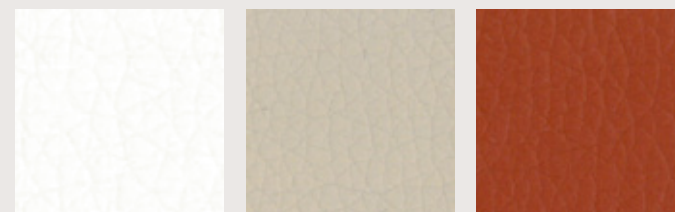
This quality fulfils the European most demanding norms with regard to its components and environmental protection.

**With:** 140cm

**Weight:** 600gr/m<sup>2</sup>

—  
**Maintenance:** Clean and care the material frequently, with lukewarm water and a damp cloth, preferably of micro fibre. Soiling may be treated with a mild soap and proceed next to its drying by using a hairdryer or, failing that, a dry cloth. It should be avoided that areas that have been treated for cleaning remain wet.

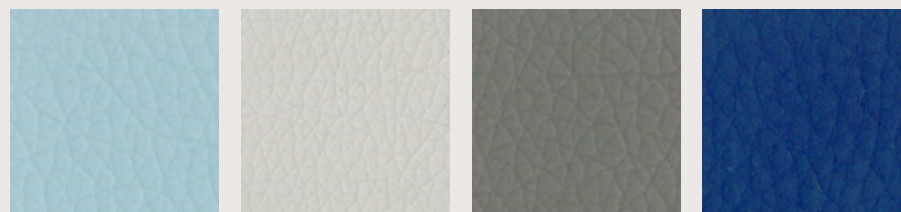
*\*Batch to catch variations may occur within commercial tolerances.*



70

76

55

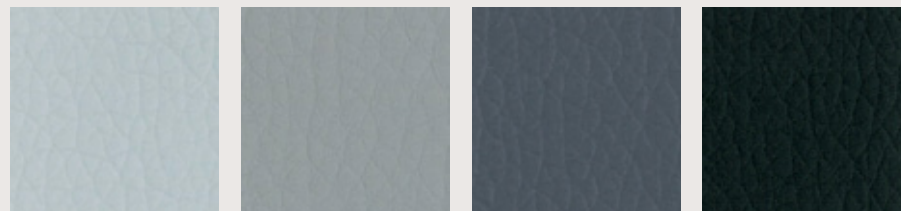


33

74

78

31



84

86

88

90

# G4 Step

by Gabriel

## DATA SHEET

### Composition:

100% trevira CS.

### Light fastness:

5 - 7, ISO 105 B02.

### Abrasion:

100.000 Martindale EN ISO 12947.

### Resistance to pilling:

4 - 5, ISO 12945-2.

### Fastness to rubbing:

Wet 4 - 5. Dry 4 - 5, ISO 105 X12.

### Flammability:

IMO MSC 307(88) Annex 1 part 8 • MED • Certificate IMO  
 • DIN 4102 B1 • NFP 92-503/504/505 M1 • BS EN 1021 1&2  
 Cigarette and Match • BS EN 1021-1 Cigarette • BS 5852  
 Part 1 0,1 Cigarette & match • BS 5852 Crib 5 • ÖNORM B  
 3825-B1-3800-Q1 UK • FAR/JAR 25.853 (a) (i) (ii) • BS 7176  
 Medium hazard • AM 18 - NF D 60-013-(only for fabric) • CA  
 TB 117-2013 • Class Uno UNI 9175 Class 1 I EMME • DIN EN  
 13501-1 B-s1,d0.

### Environment:

Oeko-Tex • EU Ecolabel • 100% free of heavy metals.

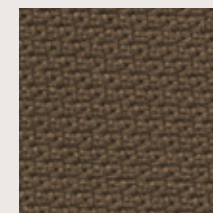
**With:** 140cm

**Weight:** 470gr/m<sup>2</sup>



60° shrinkage max. 3%

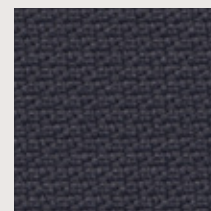
*\*Batch to catch variations may occur within commercial tolerances.*



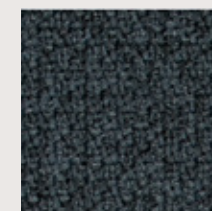
2440 - 61103



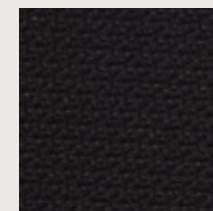
2442 - 61103



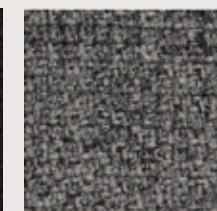
2440 - 66019



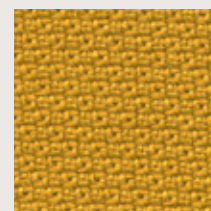
2442 - 66019



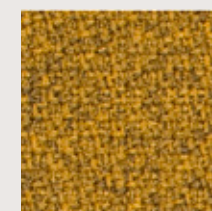
2440 - 60999



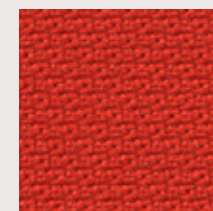
2442 - 60011



2440 - 62057



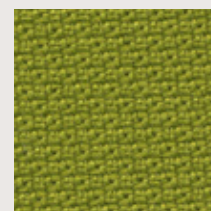
2442 - 62057



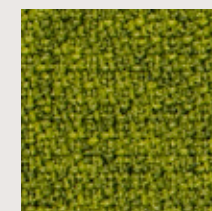
2440 - 36012



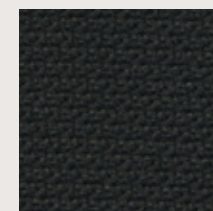
2442 - 63075



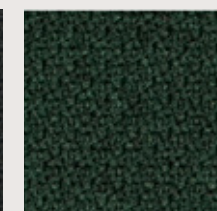
2440 - 68119



2442 - 68119



2440 - 68121



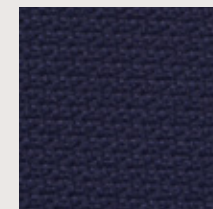
2442 - 68121



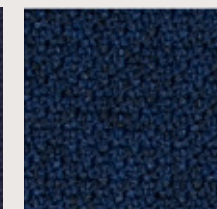
2440 - 67004



2442 - 67004



2440 - 65011



2442 - 65011

# G4 Aspect

by Camira

## DATA SHEET

### Composition:

75% trevira, 25% polyester.

### Light fastness:

5, EN ISO 105 B02.

### Abrasión:

≥50.000 Martindale EN ISO 12947.

### Fastness to rubbing:

Wet 4. Dry 4, ISO 105 X12.

### Flammability:

EN 1021 - 1 (cigarette) • EN 1021 - 2 (match) • BS 7176 Low Hazard • BS 5852 Ignition source 5 • (sobre 50kg/m<sup>3</sup> foam CMHR) • BS 7176 Medium Hazard • (sobre 50kg/m<sup>3</sup> foam CMHR) • DIN 4102 B1 • NF D 60-013 (sobre 50kg/m<sup>3</sup> foam CMHR) • ÖNORM B 3825 & A 3800-1 (sobre 58kg/m<sup>3</sup> foam CMHR) • UNI 9175 Classe 1 IM.

### Environment:

OEKO-TEX® Standard 100.

With: 140cm

Weight: 470gr/m<sup>2</sup>

—



*\*Batch to catch variations may occur within commercial tolerances.*





# G4 Fusion

by Crevin

## DATA SHEET

### Composition:

60% new wool, 40% polypropylene.

### Lightfastness:

5-6, ISO 105-B02:1998,  
ISO 105 B02/A01:2002.

### Abrasion:

62.000 Martindale  
EN ISO 12947-2:1998 • 4-5, EN ISO  
12947/ 4:1998, EN 14465:2003.

### Resistance to pilling:

4-5, EN ISO 12945/2:2000.

### Fastness to rubbing:

Wet 4-5. Dry 4-5, ISO 105 X12.

### Flammability:

BS5852 Source 0/EN 1021-1:2006  
(cigarette) • BS5852 Source 1/EN 1021-  
2:2006 (match).

### Environment:

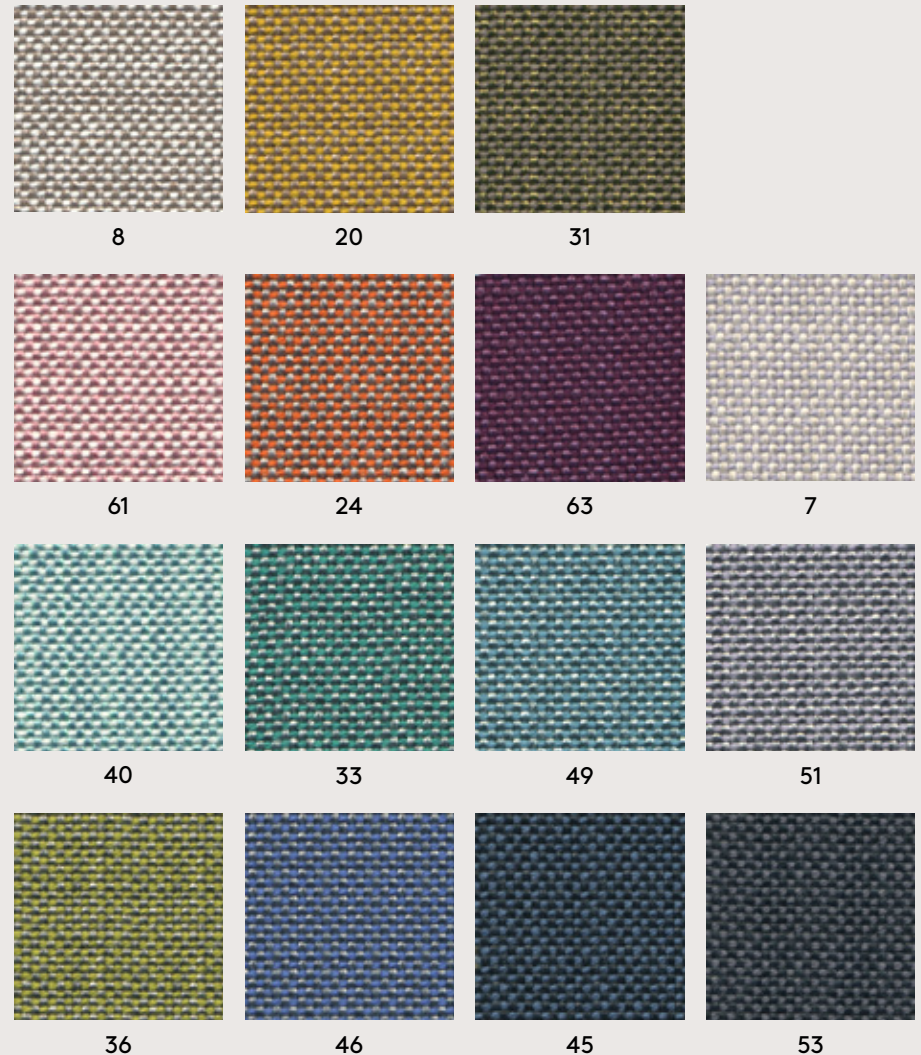
Oeko-Tex • ISO 14001 •  
100% free of heavy metals.

With: 140cm

Weight: 750gr/m<sup>2</sup>



*\*Batch to catch variations may occur  
within commercial tolerances.*





# G4 Silver

by Spradling

## DATA SHEET

### Composition:

100% polyester.

### Light fastness:

≥7, 1000 hours, DIN 54004/NTC 1479 Blue wood.

### Abrasion:

100.000 Martindale EN ISO 12947.

### Tensile strength:

Weft 233 N/cm. Warp 376 N/cm, ISO 1421 M1.

### Tear strength:

Weft 25 N/cm. Warp 25 N/cm, ISO 4674-1 MB.

### Characteristics:

Antimicrobial protection • Antibacterial protection  
• Antimycotic protection • Resistance to spitting  
and respiration. Urine resistance. Blood resistance •  
Waterproof • Oil resistance (Sunflower oil).

### Flammability:

FMVSS 302 • IMO Res. MSC.307 (88) – (2010 FTP Code)  
Annex 1 Part 8 • FAR 25.853 (A) Appendix F Part. I (a) (1) (ii) •  
UNE 23.727 90 (M 2) • EN 1021 PARTE 1 & 2 • DIN 4102 (B2) •  
ÖNORM B 3825 • ÖNORM B 3800 Teil 1 • CALIFORNIA T.B. 117-  
2013 • UFAC Fabric - Class I • NFPA 260 - Cover Fabric - Class  
I • NFP 92.503 (M 2) • EN 71-2 • UNI 9175 (1. IM) • ECE R118.

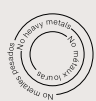
With: 140cm

Weight: 685gr/m<sup>2</sup>

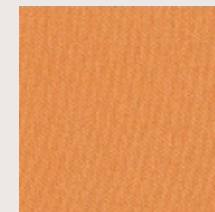
—



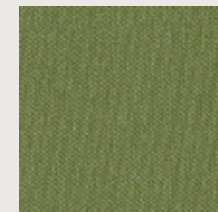
\*Batch to catch variations may occur  
within commercial tolerances.



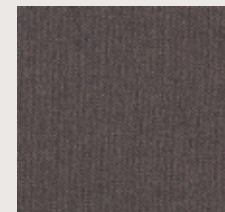
**PERMABLOK**  
ADVANCED VINYL PROTECTION



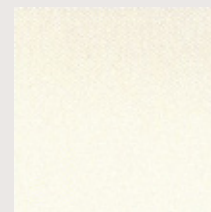
6062



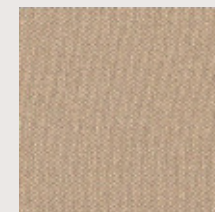
5020



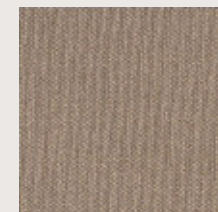
4024



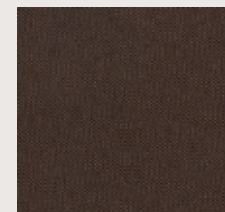
1077



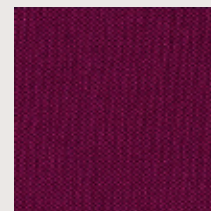
1010



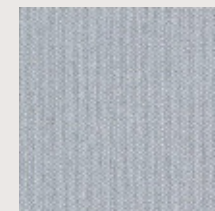
9



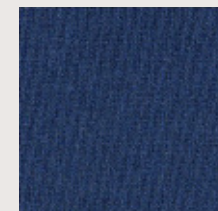
5



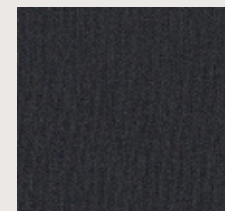
2016



4001



3007



9002

# G4 Valencia

by Spradling

## DATA SHEET

### Composition:

Topcoat: 100% Vinyl. Backing: 100% Polyester Hi-Loft2TM.

### Light fastness:

1000 hours, XENOTEST DIN 54004/NTC 1479.

### Abrasion:

300.000 cycles de Martindale EN ISO 12947:1999 Part 2.

### Cold crack resistance:

-23°C.

### Characteristics:

Antimicrobial protection • Antibacterial protection • Antimycotic protection.

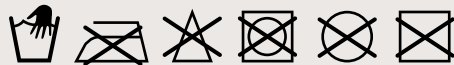
### Flammability:

EU: EN 1021 Part 1 y 2 • ES: UNE 23.727-90 1R/M.2 • FR: NF P 92-503/M2 • DE: DIN 4102 B2 • IT: UNI 9175 (1987) / UNI 9175/FA1 (1994) Classe 1.IM (UNO I EMME) • AT: ÖNORM B 3825, Gruppe 1 - Schwerbrennbares Verhalten • AT: ÖNORM A 3800 Teil 1, Qualmbildungsklasse Q1 - schwachqualmend • IMO FTP 2010 Code MSC.307 (88) Part 8 3.1 & 3.2 • US: FMVSS 302 • US: FAR 25/853 • (MED) Marine Equipment Directive (in the current version) • ECE R118.02 (replaces Directive 95/28/CE) Annexes 6, 7 & 8 • EN 71-2:2006+A1:2007 - Toy safety - Part 2: Inflammability.

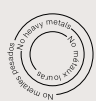
With: 140cm

Weight: 685gr/m<sup>2</sup>

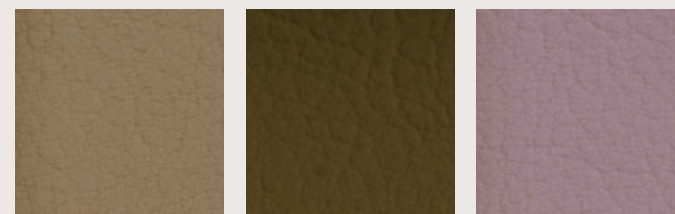
—



\*Batch to catch variations may occur within commercial tolerances.



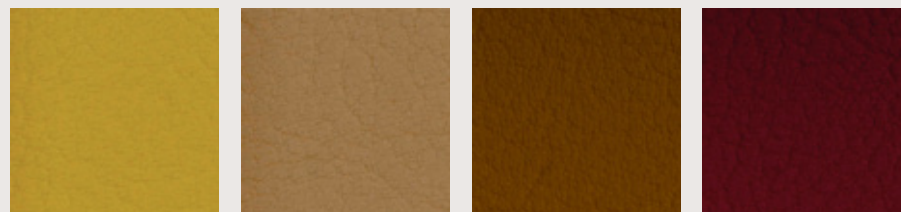
PERMABLOK®  
ADVANCED VINYL PROTECTION



2117

0002

2114

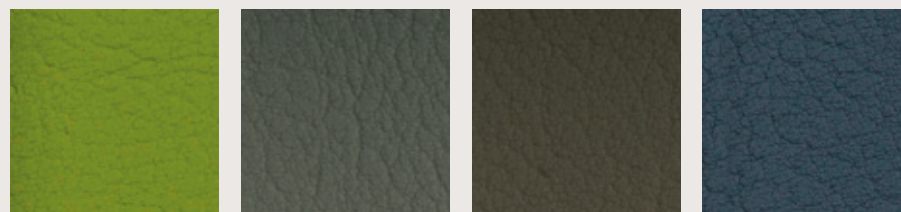


2111

2116

0035

2074

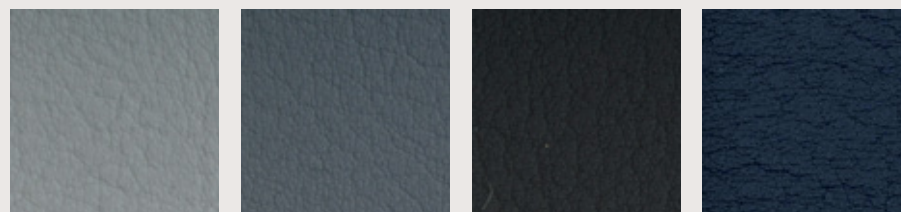


2110

4002

4001

5065



4040

4045

4003

2108



8032

4044

4041

9035

# G5 Canvas

by Kvadrat

## DATA SHEET

### Designer:

Giulio Ridolfo.

### Composition:

90% new wool, 10% nylon.

### Lightfastness:

5 - 7, ISO 105-B02.

### Abrasion:

100.000 Martindale EN ISO 12947.

### Resistance to pilling:

4 - 5, EN ISO 12945.

### Fire test:

AS/NZS 1530.3 • BS 5852 Crib 5 when flameprotected • BS 5852, ignition source 3 • BS 5852 part 1 • DIN 4102 B2 • IMO FTP Code 2010: Part 8 • NF D 60 013 • NFPA 260 • Önorm B1/Q1 • SN 198 898 5.3 with treatment • UNI 9175 11M • US Cal. Bull. 117-2013.

### Environment:

Complies with EU ecolabel "The Flower" • 100% free of heavy metals.

With: 140cm

Weight: 480gr/m<sup>2</sup>

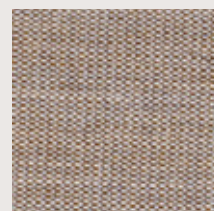
—



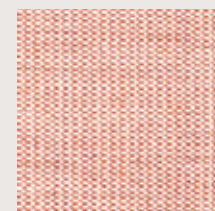
*\*Batch to catch variations may occur within commercial tolerances.*



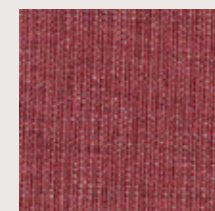
124



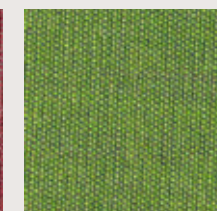
244



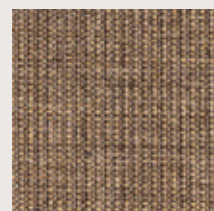
614



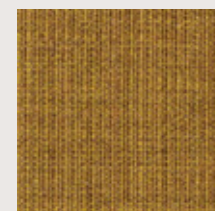
654



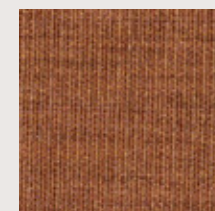
954



964



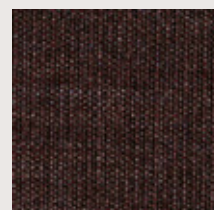
454



424



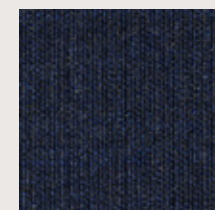
264



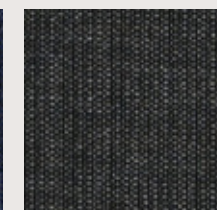
364



684



794



174



# G5 Remix

by Kvadrat

## DATA SHEET

### Designer:

Giulio Ridolfo.

### Composition:

90% new wool, 10% nylon.

### Lightfastness:

5 - 7, ISO 105-B02.

### Abrasion:

100.000 Martindale EN ISO 12947.

### Resistance to pilling:

4, EN ISO 12945.

### Fire test:

AS/NZS 1530.3 • BS 5852 Crib 5 with treatment • BS 5852 part 1 • EN 1021-1/2 • IMO FTP Code 2010: Part 8 • NF D 60 013 • NFPA 260 • Önorm B1/Q1 • UNI 9175 1IM • US Cal. Bull. 117-2013.

### Environment:

Complies with EU ecolabel "The Flower" • 100% free of heavy metals.

With: 140cm

Weight: 415gr/m<sup>2</sup>



*\*Batch to catch variations may occur within commercial tolerances.*



223



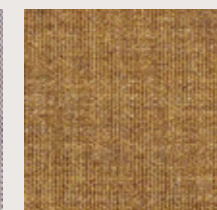
933



823



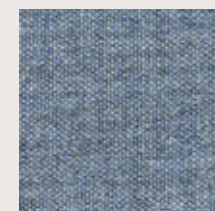
682



433



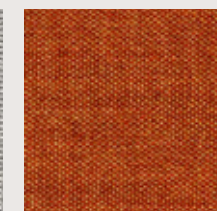
143



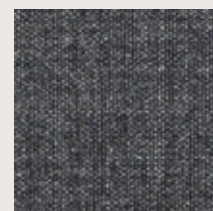
733



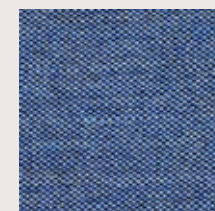
123



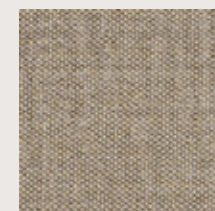
443



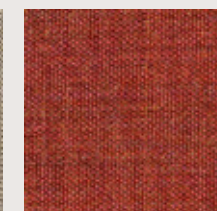
163



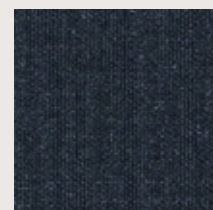
743



233



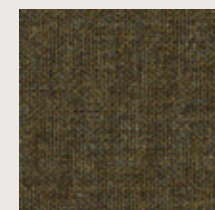
653



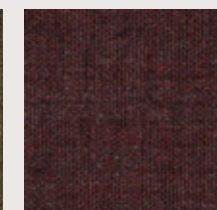
183



773



954



662



# G5 Luna/Europost

by Gabriel

## DATA SHEET - LUNA

**Designer:**  
Anne Lasthein.

**Composition:**  
90% wool, 10% polyamide.

**Light fastness:**  
5 - 6 EN ISO 105-B02.

**Abrasion:**  
70.000 Martindale EN ISO 12947-2.

**Resistance to pilling:**  
3 - 4, EN ISO 12945-2.

**Dye fastness to rubbing:**  
Wet 4 - 5. Dry 4 - 5, EN ISO 105x12.

**Flammability:**  
BS EN 1021 1&2 Cigarette and Match •  
BS 5852 Part 1 0,1 Cigarette & match •  
ÖNORM B 3825-B2-3800-Q1 UK • CA  
TB 117-2013.

**Environment:**  
Oeko-Tex • EU Ecolabel •  
100% free of heavy metals.

**With:** 140cm  
**Weight:** 680gr/m<sup>2</sup>



*\*Batch to catch variations may occur within commercial tolerances.*



## DATA SHEET - EUROPOST

**Designer:**  
Gabriel design team.

**Composition:**  
100% wool.

**Light fastness:**  
5 - 7, EN ISO 105-B02.

**Abrasion:**  
50.000 Martindale EN ISO 12947.

**Resistance to pilling:**  
4, EN ISO 12945-2.

**Dye fastness to rubbing:**  
Wet 4 - 5. Dry 4 - 5, EN ISO 105x12.

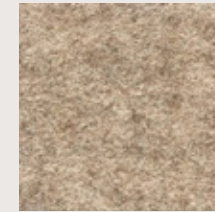
**Flammability:**  
BS 5852 Part 1 0,1 Cigarette & match • ÖNORM B  
3825-B2-3800-Q1 UK • Class Uno UNI 9175 Class  
1 I EMME • BS EN 1021 1&2 Cigarette and Match •  
IMO MSC 307(88) Annex 1 part 8 • MED Certificate  
IMO • CA TB 117-2013 • ASTM E 84 • NFPA 286  
Room corner fire test • DIN 4102 B2 • BS 476 Part  
7, class 1.

**Environment:**  
Oeko-Tex • EU Ecolabel • 100% free of heavy  
metals.

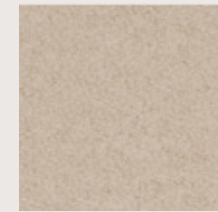
**With:** 140cm  
**Weight:** 800gr/m<sup>2</sup>



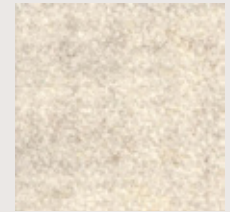
*\*Batch to catch variations may occur within commercial tolerances.*



LUNA 4101



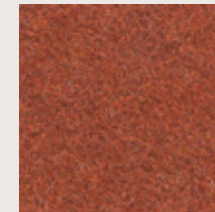
EUROPOST 61107



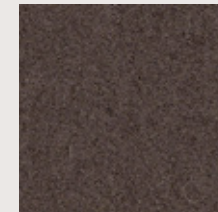
LUNA 4006



EUROPOST 63073



LUNA 4301



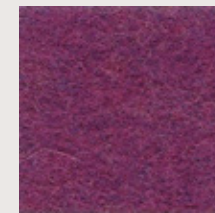
EUROPOST 61004



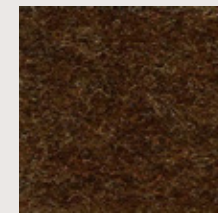
LUNA 4009



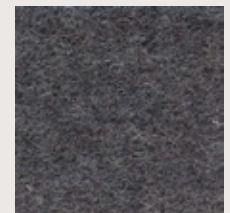
LUNA 4204



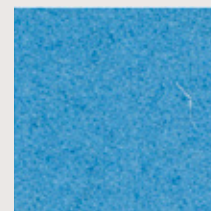
LUNA 4502



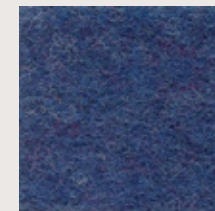
LUNA 4111



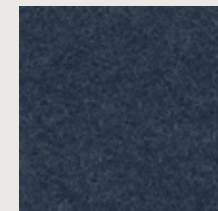
LUNA 4010



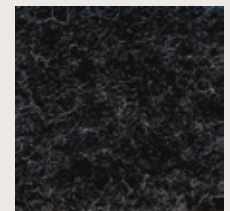
EUROPOST 66118



LUNA 4605



LUNA 4703



LUNA 4011

# G6 SteelCut Trio

by Kvadrat

## DATA SHEET

### Designer:

Frans Dijkmeijer and Giulio Ridolfo.

### Composition:

90% new wool, 10% nylon.

### Lightfastness:

5 - 7 ISO 105-B02.

### Abrasion:

100.000 Martindale EN ISO 12947.

### Resistance to pilling:

4, EN ISO 12945.

### Fire test:

AS/NZS 1530.3 • AS/NZS 3837 class 2 • BS 5852 Crib 5 with treatment • BS 5852 part 1 • DIN 4102 B2 • EN 1021-1/2 • IMO FTP Code 2010: Part 8 • NF D 60 013 • NFPA 260 • Önorm B1/Q1 • SN 198 898 5.3 with treatment • UNI 9175 11M • US Cal. Bull. 117-2013.

### Environment:

Complies with EU ecolabel "The Flower" • 100% free of heavy metals.

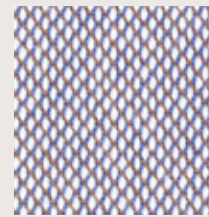
With: 140cm

Weight: 770gr/m<sup>2</sup>

—



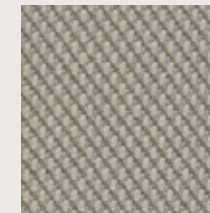
\*Batch to catch variations may occur within commercial tolerances.



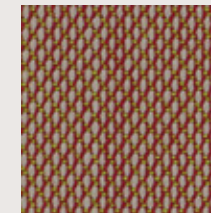
806



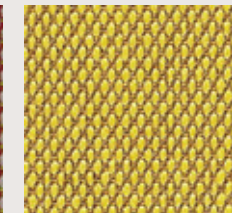
105



205



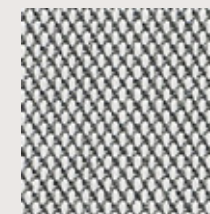
515



453



113



133



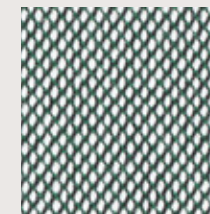
236



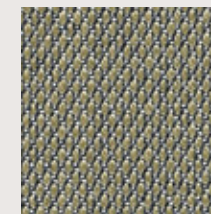
476



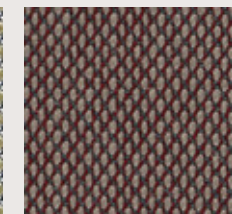
124



916



253



645



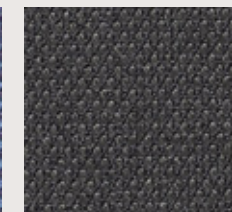
716



883



796



383



# G6 Fiord

by Kvadrat

## DATA SHEET

### Designer:

Louise Sigvardt & Tone Barnung.

### Composition:

92% new wool, 8% nylon.

### Lightfastness:

5 - 7, ISO 105-B02.

### Abrasion:

60.000 Martindale EN ISO 12947.

### Resistance to pilling:

4 - 5, EN ISO 12945.

### Fire test:

EN 1021-1/2 • BS 5852 part 1 • DIN 4102 B2 • NF D 60 013  
• UNI 9175 1IM • US Cal. Bull. 117-2013 • IMO FTP Code  
2010:Part 8 • With flame retardant treatment: • BS 5852  
Crib 5.

### Environment:

Complies with EU ecolabel "The Flower" • 100% free of  
heavy metals.

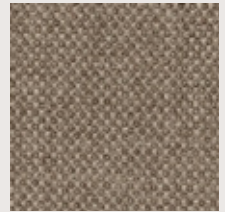
With: 140cm

Weight: 500gr/m<sup>2</sup>

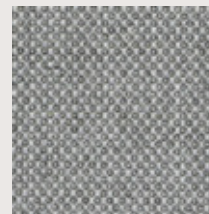
—



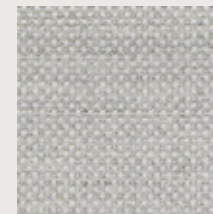
*\*Batch to catch variations may occur  
within commercial tolerances.*



271



151



121



251



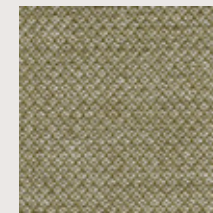
451



751



551



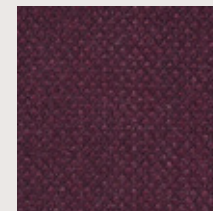
951



371



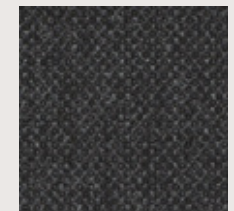
771



591



961



191



# G7 Hallingdal

by Kvadrat

## DATA SHEET

**Designer:**

Nanna Ditzel.

**Composition:**

70% new wool, 30% viscose.

**Lightfastness:**

5 - 7 ISO 105-B02.

**Abrasion:**

100.000 Martindale EN ISO 12947.

**Resistance to pilling:**

3, EN ISO 12945.

**Fire test:**

AS/NZS 1530.3 • AS/NZS 3837 • BS 5852 Crib 5 • BS5852 part 1 • DIN 4102 B2 • EN 1021-1/2 • IMO FTP Code 2010: Part 8 • NF D 60 013 • NFPA 260 • Önorm B1/Q1 • SN 198 898 5.3 with treatment • UNI 9175 1IM • US Cal. Bull. 117 – 2013

**Environment:**

Complies with EU ecolabel "The Flower".

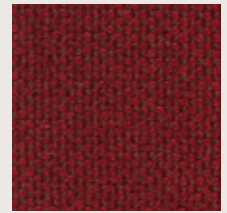
**With:** 140cm

**Weight:** 795gr/m<sup>2</sup>

—



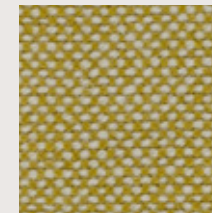
*\*Batch to batch variations may occur within commercial tolerances.*



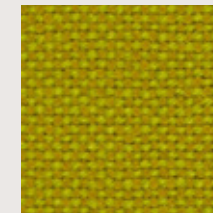
687



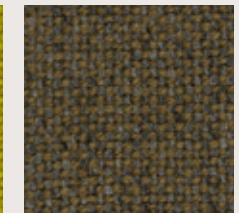
200



407



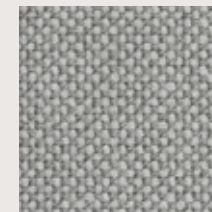
420



227



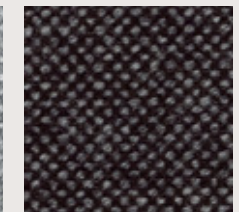
100



123



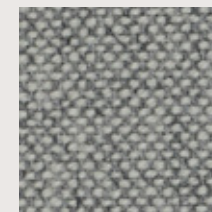
130



368



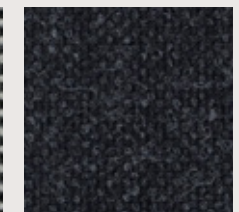
110



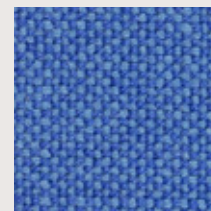
116



126



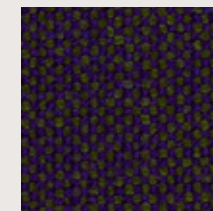
180



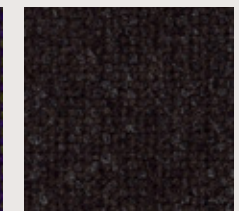
733



773



968



376

# G10 Leather

## DATA SHEET

**Composition:**

Cow leather.

**Light fastness:**

≥4/5, UNI EN ISO 105B02.

**Fastness to rubbing:**

Wet ≥4 (150 cycles). Dry ≥4 (500 cycles). Perspiration ≥4 (80 cycles), UNI EN ISO 11640: 1998 - 11641 (pH8).

**Tear strength:**

>20N, EN ISO 3377-1.

**Determination of PH:**

>3,5, EN ISO 4045.

**Adhesion of the finish:**

≥2, UNI EN ISO 11644.

**Determination of dry flex resistance:**

Without damage, UNI EN ISO 5402.

**Fire resistance:**

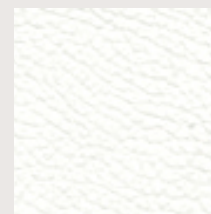
Ignition source 0 (cigarette). Ignition source 1 (match), BS 5852-1979, BS EN 1021-1-2:2006.

**Thickness:** 0,9 - 1,1mm

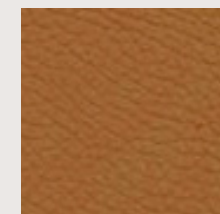
**Average surface:** 4,5m<sup>2</sup>

—  
**Maintenance:** Wash with neutral soap and water or with a cleaning product for leather.

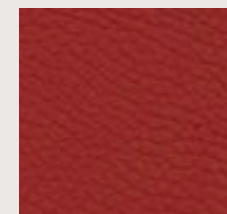
*\*Batch to catch variations may occur within commercial tolerances.*



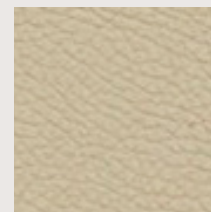
207



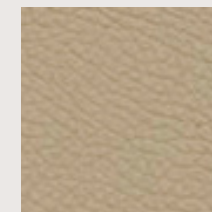
214



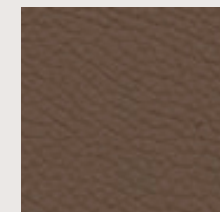
218



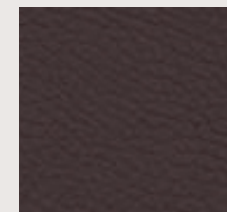
224



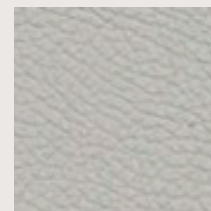
201



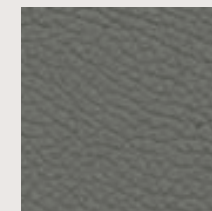
216



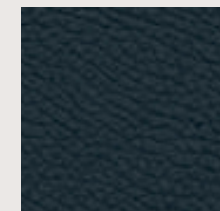
203



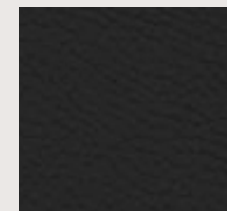
219



208



209



204

# G11 Leather

## DATA SHEET

### Composition:

Cow leather.

### Light fastness:

≥5, UNI EN ISO 105B02.

### Fastness to rubbing:

Wet ≥4 (80 cycles). Dry ≥4 (500 cycles).

Perspiration ≥4 (50 cycles), UNI EN ISO 11640 - 11641.

### Tear strength:

≥20N, EN ISO 3377-1.

### Determination of PH:

≥3,5 ≤0,7 EN ISO 4045.

### Adhesion of the finish:

≥2,5N / 10mm, UNI EN ISO 11644.

### Determination of dry flex resistance:

>50.000 cycles, UNI EN ISO 5402-1.

### Fire resistance:

Ignition source 0 (cigarette),

ignition source 1 (match), BS 5852-1:79.

**Thickness:** 0,9 - 1,1mm

**Average surface:** 4,8 - 5,0m<sup>2</sup>

—  
**Maintenance:** Wash with neutral soap and water  
or with a cleaning product for leather.

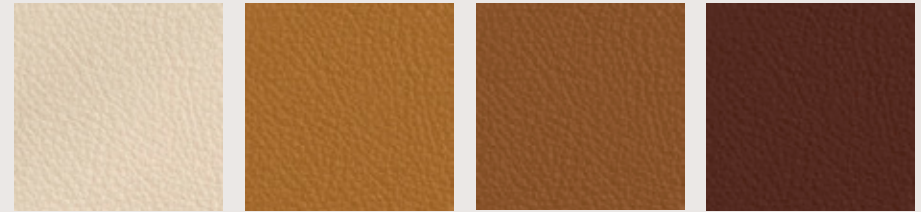
*\*Batch to catch variations may occur  
within commercial tolerances.*



333

348

346



320

331

332

344



324

362

375

326

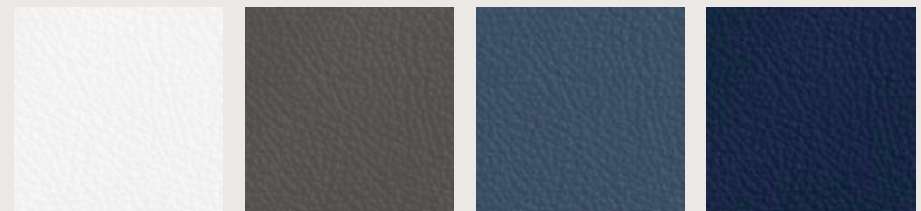


317

321

325

328



311

322

357

358