



**STOFFE  
FABRICS 2019**

**ROVO**  
SETZT ENERGIEN FREI

# ROVO STOFFE

## PREISGRUPPE 1 FABRIC GROUP 1

### BONDAI



**Charakter:** Feine Kreppoptik  
100% Polyester  
350 g/lfm Gewicht  
140 cm Breite  
150000 Scheuertouren,  
(5 Jahre Garantie)  
6 Lichtechtheit  
4/5 Reibechtheit  
EN 1021-1/-2 Feuersicherung  
CRIB5, BS 7176 Medium Hazard

**Character:** Fine crepe weave  
100% Polyester  
350 g/lfm weight per meter  
140 cm width  
150000 rubs (Martindale),  
(5 years warranty)  
6 light fastness  
4/5 fastness to rubbing  
EN 1021-1/-2 flammability  
CRIB5, BS 7176 medium hazard



0-44 orange



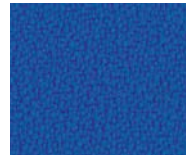
0-43 rot



0-40 weinrot



0-45 lila



0-48 ocean



0-49 dunkelblau



0-50 royalblau



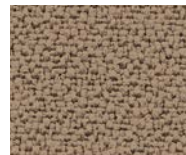
0-38 blau



0-47 grasgrün



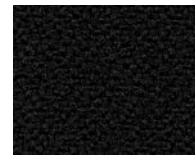
0-46 grün



0-42 beige



0-41 grau



0-39 schwarz

### QUADRINO



**Charakter:** Moderne, zeitlose  
kleine Quadratbindung  
100% Polyolefin FR  
350 g/lfm Gewicht  
140 cm Breite  
50000 Scheuertouren  
EN 14465: Grade A  
(5 Jahre Garantie)  
6 Lichtechtheit  
4 (trocken), 4 (nass) Reibechtheit DIN  
4102/B1, EN 1021-1/-2,  
NF-P-92-503 M1 BS 7176  
Medium Hazard,  
BS 5852-4 Ignition,  
Feuersicherung  
schwer entflammbar

**Character:** Contemporary fabric with  
discrete check structure  
100% Polyolefin FR  
350 g/lfm weight per meter  
140 cm width  
50000 rubs, (Martindale)  
EN 14465: Grade A,  
(5 years warranty)  
6 light fastness  
4 (dry), 4 (wet) fastness to  
rubbing  
DIN 4102/B1, EN 1021-1/-2,  
NF-P-92-503 M1 BS 7176  
Medium Hazard, BS 5852-4 Ignition,  
flammability,  
flame retardant

### ERA



**Charakter:**  
100% Polyester  
320 g/lfm Gewicht  
140 cm Breite  
100000 Scheuertouren  
(10 Jahre Garantie)  
5 Lichtechtheit,  
4 (trocken), 4 (nass) Reibechtheit  
EN 1021-1/-2 Feuersicherung  
BS 7176 Low Hazard

**Character:**  
100% Polyester  
320 g/lfm weight per meter  
140 cm width  
100000 rubs (Martindale),  
(10 years warranty)  
5 light fastness  
4 (dry), 4 (wet) fastness to rubbing  
EN 1021-1/-2 flammability  
BS 7176 Low Hazard



1-88 lachs



1-89 rot



1-90 hellblau



1-91 blau



1-24 rot



1-26 blau



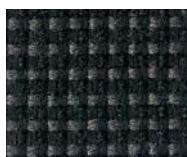
1-98 kiwi



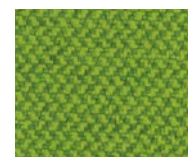
1-93 beige



1-94 umbragrau



1-95 schwarz



1-22 grün



1-27 grau



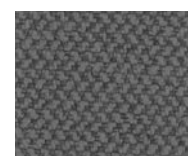
1-99 black & white



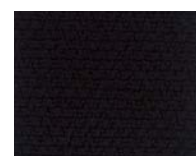
1-83 rot uni



1-87 schwarz uni



1-19 anthrazit



1-18 schwarz

# ROVO STOFFE

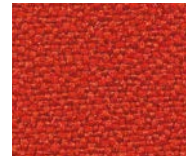
## PREISGRUPPE 1 FABRIC GROUP 1

### SUPERO\*

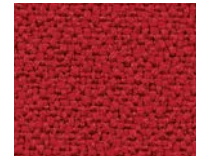


**Charakter:** Feine Kreppoptik  
100% Xtreme (Polyester) Stretch, 400 g/lfm Gewicht  
140 cm Breite  
100000 Scheuertouren (5 Jahre Garantie)  
6 Lichtechtheit,  
4 (trocken), 4 (nass) Reibechtheit  
EN 1021-1/-2 Feuersicherung  
\* Supero ist als Preisgruppe 3 in diesen und weiteren Farben in „schwer entflammbarer“ Qualität (M1/B1) lieferbar (=Trevira CS)

**Character:** Fine crepe weave  
100% Xtreme (Polyester) Stretch, 400 g/lfm weight per meter  
140 cm width  
100000 rubs (Martindale), (5 years warranty)  
6 light fastness  
4 (dry), 4 (wet) fastness to rubbing  
EN 1021-1/-2 flammability  
\* Supero is available in price group 3 in these and further colors in low-flammability quality (M1/B1) (=Trevira CS)



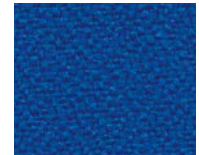
1-05 lobster



1-06 rot



1-74 aubergine



1-72 royalblau



1-07 ocean



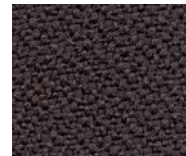
1-73 dunkelblau



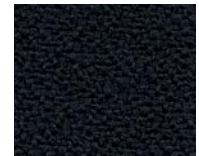
1-82 violett



1-81 grau



1-75 anthrazit



1-76 schwarz

### SUPERO PLUS



**Charakter:** Feine Kreppoptik  
100% Polyester - Trevira CS  
420 g/lfm Gewicht,  
140 cm Breite  
100000 Scheuertouren (5 Jahre Garantie)  
6 Lichtechtheit  
4/5 Reibechtheit EN 1021-1/-2  
Feuersicherung C1, B1, M1, CRIB 5, IMO A 652 (16)  
schwer entflammbar

**Character:** Fine crepe weave  
100% Polyester - Trevira CS  
420 g/lfm weight per meter,  
140 cm width  
100000 rubs (Martindale), (5 years warranty)  
6 light fastness  
4/5 fastness to rubbing EN 1021-1/-2  
flammability C1, B1, M1, CRIB 5, IMO A 652 (16)  
flame retardant



1-77 rot-melange



1-78 blau-melange



1-31 nachtblau



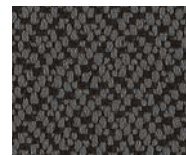
1-09 schwarz



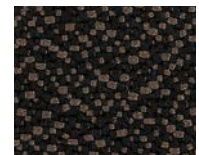
1-30 rot-kariert



1-28 anthrazit-kariert



1-79 grau-melange



1-80 schwarzbraun-melange

## PREISGRUPPE 2 FABRIC GROUP 2

### PATINA

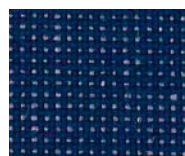


**Charakter:** Weiße Tupfen auf der Oberfläche des Stoffes aus dem im Gewebe enthaltenen Flachs  
69% Wolle, 22% Flachs, 8% Polyamid, 1% Viskose  
462 g/lfm Gewicht, 140 cm Breite  
>100000 Scheuertouren (10 Jahre Garantie), 5 Lichtechtheit  
4 (trocken), 3 (nass) Reibechtheit  
EN 1021-1/-2 Feuersicherung  
BS 5852 schwer entflammbar, BS 7176

**Character:** The white flecks scattered across the surface are created by the flax content  
69% Wool, 22% Flax, 8% Polyamide, 1% Viscose  
462 g/lfm weight per meter, 140 cm width  
>100000 rubs (Martindale), (10 years warranty) 5 light fastness,  
4 (dry), 3 (wet) fastness to rubbing  
EN 1021-1/-2 flammability  
BS 5852 flame retardant, BS 7176



2-96 rot



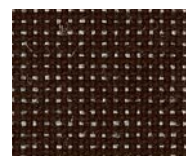
2-90 dunkelblau



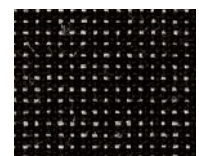
2-89 dunkelgrün



2-95 grau



2-88 anthrazit



2-94 schwarz

# PREISGRUPPE 2 FABRIC GROUP 2

## ATLANTICO



**Charakter:** Top moderne, leicht strukturierte Optik  
 100% Polyester  
 530 g/lfm Gewicht,  
 150 cm Breite 110000 Scheuertouren (10 Jahre Garantie),  
 5 Lichtechtheit 4-5 (trocken),  
 4-5 (nass) Reibechtheit  
 EN 1021-1/-2 Feuersicherung

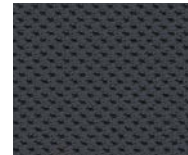
**Character:** Exciting contemporary fabric with textured surface  
 100% Polyester  
 530 g/lfm weights per meter,  
 150 cm width 110000 rubs (Martindale), (10 years warranty),  
 5 light fastness 4-5 (dry),  
 4-5 (wet) fastness to rubbing  
 EN 1021-1/-2 flammability



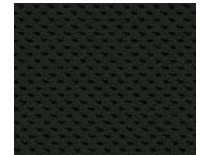
2-00 lachsrot



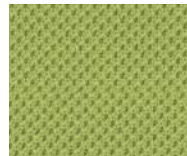
2-01 rot



2-03 anthrazit



2-04 schwarz



2-06 kiwi



2-07 violett



2-08 gletscher

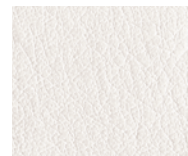


2-11 blau

## PRONTO

**Charakter:**  
 Kunstleder mit leichten Mastfalten  
 88% PVC, 12% PES/BW-Gewirke,  
 680 g/m2 Gewicht, 140 cm Breite  
 - pflegeleicht - angenehm weich  
 - guter Griff - dehnfähig  
 - abriebfest - reißfest  
 - Urin- und Blutbeständig  
 - Desinfektionsmittelbeständig

**Character:**  
 Imitation leather with light wrinkles  
 88% PVC, 12% PES/BW-fabrics, 680  
 g/m2 weight, 140 cm width  
 - easy to clean - soft supple - good  
 touch - elastic - abrasion resistant  
 - tear resistant - urine and blood  
 resistant - resistant to disinfections



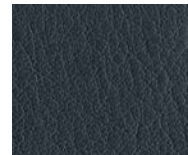
2-45 weiß



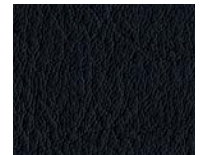
2-46 rot



2-47 blau



2-48 grau



2-49 schwarz

nicht für alle  
 Modelle lieferbar  
 not available  
 for all models

## MICRO



**Charakter:**  
 Weicher Griff,  
 feine Optik  
 Komfort-Microfaser  
 100% Polyester  
 370 g/lfm Gewicht  
 150 cm Breite  
 30000 Scheuertouren  
 4 Lichtechtheit  
 4 (trocken), 4 (nass)  
 Reibechtheit  
 EN 1021 Feuersicherung

**Character:**  
 Exciting contemporary fabric  
 Comfort-Microfiber  
 100% Polyester  
 370 g/lfm weight per meter  
 150 cm width  
 30000 rubs (Marindale)  
 4 light fastness  
 4 (dry), 4 (wet)  
 fastness to rubbing  
 EN 1021 flammability



2-16 terra



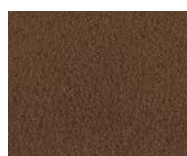
2-17 rosso



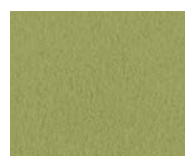
2-18 blu



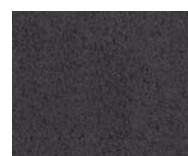
2-23 violett



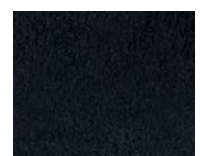
2-21 braun



2-25 verde



2-19 grigio



2-28 nero

# ROVO STOFFE

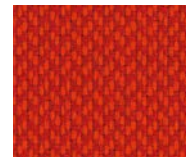
## PREISGRUPPE 2 FABRIC GROUP 2

### RIVA



**Charakter:** Kompaktes, elastisches Gewebe, garngefärbt, 100 % Polyester, Trevira CS 365 g/lfm Gewicht, 140 cm Breite, 100 000 Scheuertouren, 6 Lichtechtheit, 4-5 (trocken), 4-5 (nass), Reibechtheit EN 1021 -1/-2 Feuersicherung C1, B1, M1, CRIB 5, schwer entflammbar

**Character:** Compact elastic fabric, 100 % Polyester, Trevira CS 365 g/lfm weight, 140 cm width 100 000 rubs (Martindale), 6 Light fastness, 4-5 (dry), 4-5 (wet) fastness to rubbing EN 1021-1/-2 Flammability C1, B1, M1, CRIB 5, flame retardant



2-64 orange



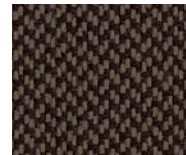
2-50 rot-meliert



2-51 grün-meliert



2-65 blau



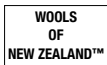
2-52 braun-meliert



2-63 schwarz-meliert

## PREISGRUPPE 3 FABRIC GROUP 3

### FAME



**Charakter:** Feine, leicht quadratische Wollstruktur 95% NZ-Wolle, 5% Polyamid 610 g/lfm Gewicht, 140 cm Breite 200000 Scheuertouren (10 Jahre Garantie) 5 Lichtechtheit, 4-5 (trocken), 4-5 (nass) Reibechtheit EN 1021-1/-2 Feuersicherung

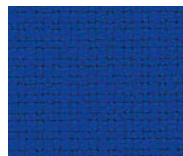
**Character:** Wool fabric woven with simple and discrete structure 95% NZ-wool, 5% Polyamid 610 g/lfm weight per meter, 140 cm width 200000 rubs (Martindale), (10 years warranty) 5 light fastness, 4-5 (dry), 4-5 (wet) fastness to rubbing EN 1021-1/-2 flammability



3-66 aubergine



3-60 rot



3-61 blau



3-62 dunkelblau

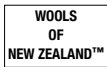


3-63 anthrazit



3-64 schwarz

### GAYA



**Charakter:** Feines Wollkrepp 100% Kammgarnwolle 520 g/lfm Gewicht, 140 cm Breite 50000 Scheuertouren (5 Jahre Garantie), 5 Lichtechtheit 4-5 (trocken), 4-5 (nass) Reibechtheit EN 1021-1/-2 Feuersicherung DIN 4102 B2, BS 5852, NF-P-92503 M2

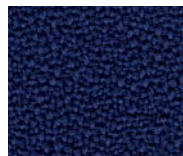
**Charcter:** Fine wool crepe weave 100% worsted wool 520 g/lfm weight per meter, 140 cm width 50000 rubs (Martindale), (5 years warranty), 5 light fastness, 4-5 (dry), 4-5 (wet) fastness to rubbing EN 1021-1/-2 flammability DIN 4102 B2, BS 5852, NF-P-92503 M2



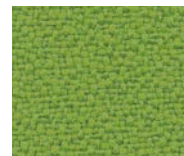
3-80 rot



3-85 marineblau



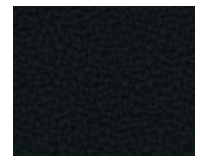
3-87 dunkelblau



3-95 apfelgrün



3-89 grau



3-88 schwarz

### ATLANTICO WELDED

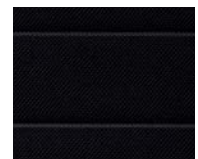


**Charakter:** Top moderne, leicht strukturierte Optik mit Schaumpolster PU 100% Polyester 771 g/lfm Gewicht, 138 cm Breite 110000 Scheuertouren (10 Jahre Garantie), 5 Lichtechtheit 4-5 (trocken), 4-5 (nass) Reibechtheit EN 1021-1/-2 Feuersicherung

**Character:** Exciting contemporary fabric with textured surface with foam upholstery PU 100% Polyester 771 g/lfm weights per meter, 138 cm width, 110000 rubs (Martindale), (10 years warranty), 5 light fastness 4-5 (dry), 4-5 (wet) fastness to rubbing EN 1021-1/-2 flammability



3-41 rot



3-40 schwarz

nur lieferbar für Rückenpolster der Modelle R12 und R16  
only available for backside series R12 and R16

## PREISGRUPPE 3 FABRIC GROUP 3

### CLIMATEX

climatex®

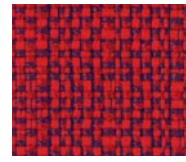


**Charakter:** Feine, leicht quadratische Wollstruktur  
68% Cradura™, 18% zertifizierte Farmwolle, 14% Redesigned Lenzing FRTM

543 g/lfm Gewicht,  
140 cm Breite  
>100000 Scheuertouren  
6 Lichtechtheit  
4-5 (trocken), 4-5 (nass)  
EN 1021-1/-2 Feuersicherung  
BS 5852

**Character:** Wool fabric woven with simple and discrete structure  
68% Cradura™, 18% zertifizierte Farmwolle, 14% Redesigned Lenzing FRTM

543 g/lfm weights per meter, 140 cm width, >100000 rubs (Martindale),  
6 light fastness  
4-5 (dry), 4-5 (wet)  
EN 1021-1/-2 flammability  
BS 5852



3-31 rot meliert



3-33 grau meliert



3-32 schwarz/grau meliert



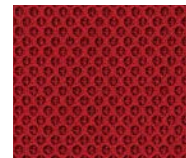
3-34 schwarz

### RUNNER



**Charakter:** Netzgewebe,  
High Tech Faser, atmungsaktiv und elastisch,  
100% Polyester, 510 g/lfm Gewicht,  
160 cm Breite,  
70000 Scheuertouren  
(10 Jahre Garantie) Martindale,  
5 Lichtechtheit,  
4-5 Reibechtheit,  
EN 1021-1/-2 Feuersicherung

**Character:** Meshware  
High Tech fiber, breathable and elastic,  
100% Polyester, 510 g/lfm weight per meter, 160 cm width,  
70000 rubs (Martindale),  
(10 years warranty),  
5 light fastness,  
4-5 fastness to rubbing,  
EN 1021-1/-2 flammability



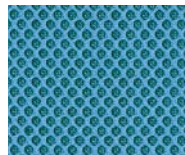
3-12 Rot



3-13 orange



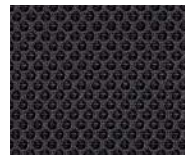
3-14 kiwi



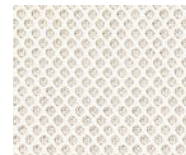
3-15 gletscher



3-11 grau



3-17 anthrazit



3-16 weiß



3-10 schwarz

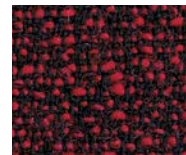
## PREISGRUPPE 4 FABRIC GROUP 4

### EXTREMO



**Charakter:** Äußerst strapazierfähiges, meliertes Krepp für 24-h Einsatz,  
50% Polyamid,  
33% Schurwolle, 10% Visil,  
7% Viskose, 610 g/lfm Gewicht, 140 cm Breite,  
500000 Scheuertouren  
(10 Jahre Garantie)  
6 Lichtechtheit,  
4 (trocken), 4 (nass)  
Reibechtheit  
EN 1021-1/-2 Feuersicherung BS 7176 Medium Hazard,  
BS 5852 schwer entflammbar

**Character:** Very strong crepe weave for 24-h use,  
50% Polyamid, 33% virgin wool, 10% Visil, 7% Viskose,  
610 g/lfm weight per meter, 140 cm width,  
500000 rubs (Martindale),  
(10 years warranty)  
6 light fastness,  
4 (dry), 4 (wet)  
fastness to rubbing  
EN 1021-1/-2 flammability  
BS 7176 Medium Hazard,  
BS 5852 fire retardant



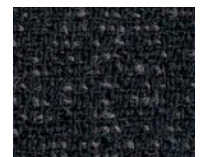
4-70 rot



4-71 multi



4-72 blau



4-73 schwarz

# ROVO STOFFE

## PREISGRUPPE 4 FABRIC GROUP 4

### SYNERGY



**Charakter:** Wollmischgewebe mit weichem Griff, exquisit fasergefärbten Nuancen und opulent stückgefärbten Unis  
95% Schurwolle, 5% Polyamid  
560 g/lfm Gewicht, 140 cm Breite  
>100000 Scheuertouren (10 Jahre Garantie), 5 Lichtechtheit  
4 (trocken), 4 (nass) Reibechtheit  
EN 1021-1/-2 Feuersicherung  
BS 7176,  
NF D 60-013

**Character:** A soft handle wool blend fabric, featuring exquisite fibre dyed shades and sumptuous piece dyed solids  
95% Virgin Wool, 5% Polyamide  
560 g/lfm weight per meter, 140 cm width >100000 rubs (Martindale), (10 years warranty) 5 light fastness, 4 (dry), 4 (wet) fastness to rubbing  
EN 1021-1/-2 flammability  
BS 7176, NF D 60-013



4-85 weinrot



4-84 blau



4-83 dunkelblau



4-81 grau



4-80 anthrazit



4-82 schwarz

## PREISGRUPPE 5 FABRIC GROUP 5

### COMFORT



**Charakter:** Besonders hochwertige, elegante Komfort-Microfaser  
88% Polyester  
12% Polyurethan  
385 g/lfm Gewicht,  
140 cm Breite  
100000 Scheuertouren  
(10 Jahre Garantie)  
5 Lichtechtheit  
4-5 (trocken), 4-5 (nass)  
Reibechtheit  
EN 1021-1 Feuersicherung  
BS 5852 P.1

**Character:** Very comfortable micro fiber fabric  
88% Polyester  
12% Polyurethan  
385 g/lfm weight per meter,  
140 cm width  
100000 rubs (Martindale),  
(10 years warranty)  
5 light fastness  
4-5 (dry), 4-5 (wet)  
fastness to rubbing  
EN 1021-1 flammability  
BS 5852 P.1



5-90 schwarz

In weiteren  
100 Farben lieferbar.  
In further  
100 colors available.

### SONDERLEDER SPECIAL LEATHER



Nappaleder pigmentiert  
für Modellreihen XP, XL

Black pigmented Nappa leather for  
models XP, XL



5-04 schwarz

### SEMIANILIN-LEDER SEMIANILIN LEATHER

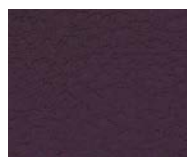


Feines Nappaleder pigmentiert.  
Weitere Lederfarben auf Anfrage.

Pigmented Nappa leather.  
Further colors upon request.



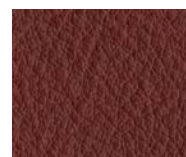
5-00 rubinrot



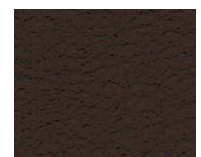
5-60 aubergine



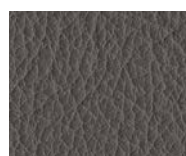
5-61 blau



5-03 cognac



5-63 braun



5-02 grau



5-64 schwarz



5-68 weiß

# PREISGRUPPE 7 FABRIC GROUP 7

## PREMIUM LEDER PREMIUM LEATHER

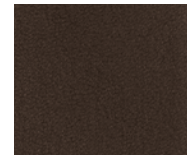


Feinstes Nappaleder, naturbelassen, besonders weicher Griff, atmungsaktiv, ohne chemische Lösungsmittel. Für Modelle XZ. (Weitere Modelle auf Anfrage)

Finest Nappa Premium-leather, natural, soft touch, breathable, without any chemical solvents. For models XZ. (Further models upon request)



7-03 schwarz



7-05 mittelbraun



7-06 schwarz gelocht

## SOLO

### 3D-GESTRICK



**Charakter:**  
3D-Gestrick  
100 % Polyamid,  
40.000 Scheuertouren (Martindale),  
4 Lichtechtheit,  
4-5 Reibechtheit,  
EN 1021-1/-2 Feuersicherung

**Character:**  
3D-woven fabric upholstery  
100 % Polyamide,  
40.000 rubs (Martindale),  
4 light fastness,  
4-5 fastness to rubbing,  
Flame-retardant, DIN EN 1021



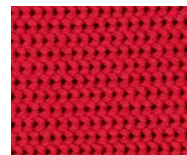
3-45 schwarz



3-46 kiwi



3-47 blau



3-48 rot



3-49 grau



3-50 anthrazit

### SENSO

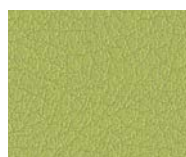


**Charakter:** Kunstleder mit leichten Mastfalten  
88% PVC, 12% PES/BW-Gewirke,  
670 g/m2 Gewicht, 140 cm Breite  
150.000 Scheuertouren (Martindale),  
EN 1021-1/-2 Feuersicherung  
Frei von AZO/FCKW/PCP/PCB/PCT  
Erfüllt die REACH  
- pflegeleicht  
- angenehm weich  
- hautverträglich  
- abriebfest, reißfest, wasserdicht  
- urin-, blut-, schweißbeständig  
- desinfektionsmittelbeständig

**Character:** Imitation leather with light wrinkles  
88% PVC, 12% PES/BW-fabrics,  
670 g/m2 weight, 140 cm width  
150000 rubs (Martindale)  
without AZO/FCKW/PCP/PCB/PCT  
meets the REACH  
- easy to clean  
- soft supple  
- good touch  
- elastic  
- abrasion resistant  
- tear resistant  
- urine and blood resistant  
- resistant to disinfections



3-75 schwarz



3-76 kiwi



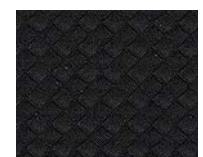
3-77 blau



3-78 rot



3-79 grau

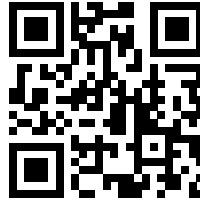


3-74 carbon



# ROVO

SETZT ENERGIEN FREI



Völkle Bürostühle GmbH  
Hohenholz 1 · 72290 Loßburg  
Phone +49 (0) 74 46/182-0  
Fax +49 (0) 74 46/182-160  
Germany  
[www.rovo.de](http://www.rovo.de)